

UcamX v2016 Installation Manual for Windows

Ucamco Software
February 2016

© Copyright Ucamco NV, Gent, Belgium

All rights reserved. This material, information and instructions for use contained herein are the property of Ucamco. The material, information and instructions are provided on an AS IS basis without warranty of any kind. There are no warranties granted or extended by this document. Furthermore Ucamco does not warrant, guarantee or make any representations regarding the use, or the results of the use of the software or the information contained herein. Ucamco shall not be liable for any direct, indirect, consequential or incidental damages arising out of the use or inability to use the software or the information contained herein.

The information contained herein is subject to change without prior notice. Revisions may be issued from time to time to advise of such changes and/or additions. No part of this document may be reproduced, stored in a data base or retrieval system, or published, in any form or in any way, electronically, mechanically, by print, photoprint, microfilm or any other means without prior written permission from Ucamco.

This document supersedes all previous dated versions.

All product names cited are trademarks or registered trademarks of their respective owners.

Correspondence regarding this publication can be sent to:

Ucamco NV
Bijenstraat 19,
B-9051 Gent,
Belgium

For more information:

Our web site: <http://www.ucamco.com>

E-mail: info@ucamco.com

About Ucamco

Ucamco (formerly Barco ETS) is a market leader in PCB CAM software, laser photoplotting and direct imaging systems, with a global network of sales and support centers. Headquartered in Ghent, Belgium, Ucamco has over 25 years of ongoing experience in developing and supporting leading-edge photoplotters and front-end tooling solutions for the global PCB industry. Key to this success is the company's uncompromising pursuit of engineering excellence in all its products.

Helpdesk

Europe, Middle East, Africa, Latin Amerika	Asia Pacific	North America
<p>Customer Support for Plotters, Software en ManiaBarco AOI</p> <p>Monday - Friday: 8.30 – 17.30 MET ☎ + 32 9 216 99 00</p> <p>General support: support@ucamco.com License: license@ucamco.com Java™ HyperTool: hypertool@ucamco.com HyperScript: hyperscript@ucamco.com General information: info@ucamco.com Sales: sales@ucamco.com</p>	<p>Please contact our business partner for your country during support working hours</p> <p>see contacts page</p>	<p>Customer Support for Plotters, Software en ManiaBarco AOI</p> <p>Monday - Friday: 8.30 am - 5.30 pm Pacific Time Saturday : 10 am to 4 pm Pacific Time +1 949 632 6895</p> <p>General support: support@ucamco.us License: license@ucamco.us Java™ HyperTool: hypertool@ucamco.us HyperScript: hyperscript@ucamco.us General information: info@ucamco.us</p>

Table of Contents

Table of Contents	iii
1 Introduction	5
1.1 Ucamco's CAM Products	5
1.2 About This Guide	5
1.3 Other Available Documentation	6
2 Upgrading from Ucam to UcamX	7
2.1 License Manager Compatibility	7
2.2 License File Compatibility	7
2.3 Download UcamX v2016.x from our FTP Server	7
2.4 Install the Downloaded Software	7
3 Before you install	8
3.1 System Requirements	8
3.2 Backup	8
3.3 Server/Client Configurations	8
3.4 About Installing Versions in Parallel	8
4 Installation Procedure	10
4.1 Starting the Installer	10
4.2 Welcome	10
4.3 What's New?	10
4.4 License Agreement	11
4.5 What To Install?	11
4.6 Choose CAM product	12
4.7 File Associations	12
4.8 SELECT PARALLEL PROCESSING (PP) MODE	13
4.9 SELECT DEFAULT UNIT	13
4.10 Choose Install Folder	14
4.11 Choose CFG Directory	15
4.11.1 First Install	15
4.11.2 Upgrade or Parallel Install	15
4.12 Install License File	16
4.13 Pre-Installation Summary	16
4.14 Installation	17
4.15 User Account Management	17
4.16 Install Complete	18
5 License Manager Troubleshooting	19
5.1 Format of a License File	19

5.2	Manual installation of a License File	20
5.3	License Management using LMTOOLS	20
5.3.1	Manual Startup of License manager service	20
5.3.2	Checking the logfile	21
5.4	LMTools Troubleshooting	23
5.4.1	License Manager Doesn't Start	23
5.4.2	Locked License	23
5.4.3	Licensed Number of Users Already Reached	23
5.4.4	Encryption Code in License File Is Inconsistent.....	23
5.4.5	Invalid Host.....	24
5.4.6	Cannot Find SERVER Hostname	24
5.4.7	License Server Does Not Support this Feature	24
5.4.8	License File Does Not Support this Version.....	24
5.4.9	FLEXlm Bad System Date.....	24
5.5	Configuring the License Manager as a Windows Service.....	24

1 Introduction

1.1 Ucamco's CAM Products

This installer contains Ucamco's range of CAM software products, including UCAMX and various machine frontends for AOI, Electrical Test and plotting.

UCAMX is Ucamco's pre-production engineering solution for the electronics manufacturing industry. It is developed to provide PCB manufacturing with zero-defect tooling. UCAMX can accept a wide variety of PCB data as well as generate all data and process information for your production equipment.

UCAMX keeps all functionality of its predecessor UCAM and adds:

- ❑ A new graphical user interface with operator definable workspaces
- ❑ Optimal performance using parallel processing
- ❑ Multi job processing via load balanced sessions
- ❑ Support for new Gerber version 2 (X2)

Input

- CAD formats
- Standard formats
- Integration formats
-







Output

- Automated Optical Inspection (AOI)
- Electrical Test
- Imaging
- Drill / Rout
- Management Information System
-

1.2 About This Guide

This Installation Guide is aimed at customers who are ready to install or reinstall UcamX or another CAM product from Ucamco on a Windows PC.

The following conventions are used in this document:

 Note:	Provides essential extra information.
 Tip:	Provides useful extra information.
 Example:	Contains examples of file syntax, commands, settings, etc.
 Warning:	Contains an important warning.

1.3 Other Available Documentation

Ucamco offers its customers a wide range of documentation on all its software - including installation requirements and procedures, release information, detailed task descriptions and info on customer support availability. Specifically for its range of CAM products the following documents are available.

Ucamco Software Installation Requirements

This Guide aims at prospective users and outlines the equipment required to run Ucamco's CAM products, including UcamX and various machine frontends.

You can download this manual from our download page www.ucamco.com/downloads

License Server Installation Manual for Windows

A document explaining how to setup/upgrade a license server and how to obtain and install a valid license file.

You can download this manual from our download page www.ucamco.com/downloads

Online Help

Each new software installation comes with an updated version of the extensive, context-sensitive online help system.

The online help contains referential information as well as step-by-step task descriptions, a detailed index, a glossary and a full text search function to facilitate quick troubleshooting and swift problem-solving for complex issues.

2 Upgrading from Ucam to UcamX

If you are upgrading from Ucam to UcamX v2016.x, make sure to read and follow the procedure below.

2.1 License Manager Compatibility

Upgrading to UcamX v2016 from Ucam (v9.x, v8.x, ...) requires a new license manager. Make sure your license manager is updated before installing UcamX v2016.x. More information can be found in the License Server Installation Manual

2.2 License File Compatibility

Upgrading to v2016.x requires a new license file.

2.3 Download UcamX v2016.x from our FTP Server

If you qualify for an upgrade you can find the installer, utilities and documentation on the Ucamco FTP server (<ftp.ucamco.com>). Login using the user and password you received from Ucamco and go to the *Ucam/UcamX_2016.xx directory*. If you have problems to access the FTP site, please contact your local customer care responsible.

For installation you need to download the following files:

- ❑ *X2016_yymmdd_win32.exe* – UcamX installer for 32 bit systems
- ❑ *X2016_yymmdd_win64.exe* – UcamX installer for 64 bit systems
- ❑ *Ucamco Software Installation Requirements*
 - the preinstallation guide for Ucamco's CAM products.
- ❑ *UcamX v2016 Installation Manual for Windows* – this document

For installation of a license server or to retrieve the host-id of your PC you need to download the following files:

- ❑ *License/v1.1/license_v11_win.exe* – the license server installer
- ❑ *License/v1.1/mbhostid_win.exe* – the hostID utility

2.4 Install the Downloaded Software

Install the new software following the installation instructions in the Installation Manual.

In case of problems during the installation, please contact Ucamco support (support@ucamco.com).

3 Before you install

Before you start installing UCAMX, please follow the instructions in this chapter to make sure your system is configured for the type of installation you want to perform.

3.1 System Requirements

Check if your hardware meets the minimum requirements to run UcamX v2016.x. See the Ucamco Software Installation Requirements document.

3.2 Backup

We recommend you make a complete backup of your current configuration before starting the UCAMX installation.

3.3 Server/Client Configurations

If you want to install and use UcamX on only one machine, skip this section and continue with section 3.4 About Installing Versions in Parallel.

If you want to install UcamX in a server/client environment, where the client can use the UcamX installation of a server machine, you first need configure the machines that are going to be used as server and client.

In a server/client environment, the client can use the software of the server only when the disk of the server is mounted on the client.

To install the server/client configurations, please follow these instructions.



Note: In this procedure `s_hostname` stands for server hostname and `c_hostname` for the client hostname. We assume that UCAMX is installed on the server in `c:\ucamco`

- 1 On the server, share the directory where UCAMX is installed. For detailed instructions, please refer to your Windows 7/8 manual.
- 2 To map the server directory where UCAMX is installed, open Windows Explorer on the client and choose **Map Network Drive** from the **Tools** menu.
- 3 Specify the drive to which you want to map (e.g.: `G:`) and the path you want to map.



Example: `\\s_hostname\ucamco`

3.4 About Installing Versions in Parallel

If you are either

- installing UcamX for the *first time*, or
- upgrading* an existing Ucam installation and *replacing* that old version with the new one,

you can now start the general install procedure described in the following chapters.

It is however also possible to install different versions of UCAMX in parallel, so you can keep a previous installation. To do this you need to make a few modifications to your system.

Shortcuts

The UCAMX installer will create two shortcuts to start UCAMX: one on the desktop and one in a UcamX folder in the Windows Start menu. These shortcuts will be named: UCAMX vx.y (e.g.: UCAMX v2016.2).

If shortcuts with this name already exist, they will be overwritten. Therefore, rename the UcamX shortcuts before installing another version of UCAMX.

Environment variables

When you install UCAMX the following environment variables will be set.

Environment Variable	Value
ETSCAM_CFG	Path to the UCAMX CFG directory
HOME	Path to the UCAMX Home directory
MANIAB_LICENSE_FILE	Path to the UCAMX License File
MT_UCAM_OPTIONS	This string adds one or more parameters to the UcamX call at startup. eg to set the default unit to mm: "-unit=mm"
UCAM_BASEPATH	Default location for installation of UcamX. eg "c:\ucamco"

When you install UCAMX on a system with UCAMX already installed on it, the UCAMX installer might modify the value of these three environment variables.

However, we recommend you install UCAMX in such a way that the value of these three environment variables will be the same for each installation (i.e. each UCAMX installation uses the same CFG directory, Home directory and License File).



Tip: If you want to know the current value of an environment variable, start a DOS session and type **echo %variable_name%** at the command prompt.



Example: echo %ETSCAM_CFG%

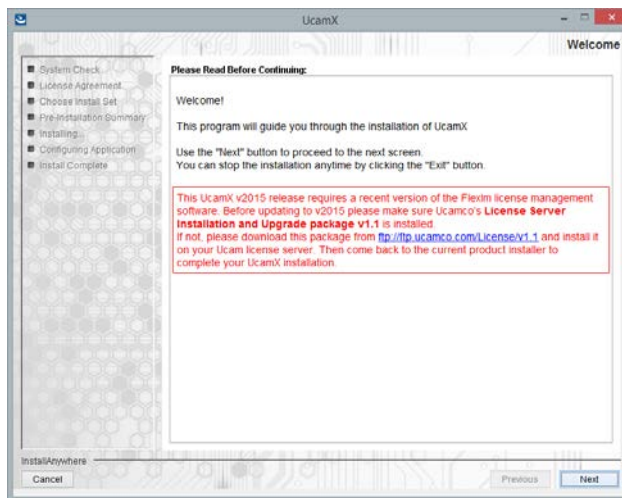
4 Installation Procedure

4.1 Starting the Installer

The installer is an executable called `x2016_yymmdd_winxx.exe`. Double-click the file from within Windows Explorer to start the installer.

4.2 Welcome

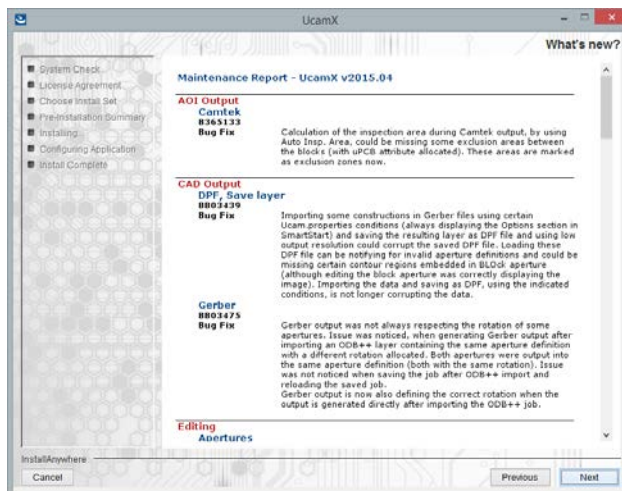
The **Welcome** screen shows important info regarding the installation procedure.



- 1 Read the info carefully
- 2 Click Next to continue

4.3 What's New?

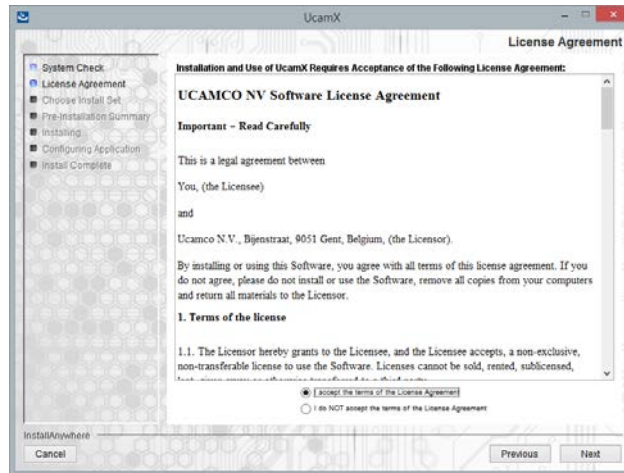
The **What's New** screen shows all Maintenance Updates for this version.



- 1 Read the info
- 2 Click Next to continue

4.4 License Agreement

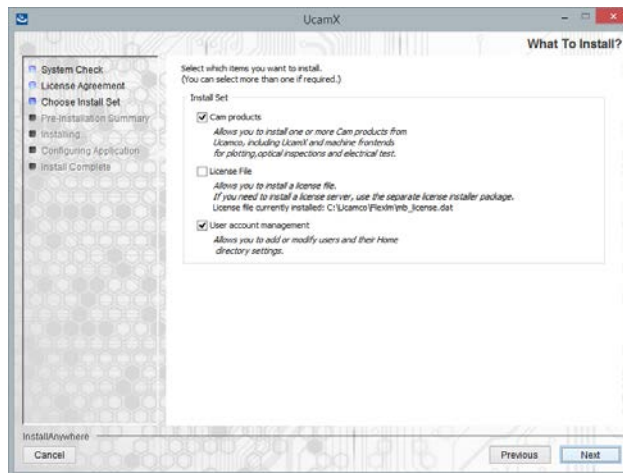
The **License Agreement** contains the license information.




- 1 Read the entire License Agreement carefully
- 2 Scroll down and select “*I accept the terms of the License Agreement*” to agree with the license agreement
- 3 Click *Next* to continue

4.5 What To Install?

In the **What To Install** screen you select which components to install.




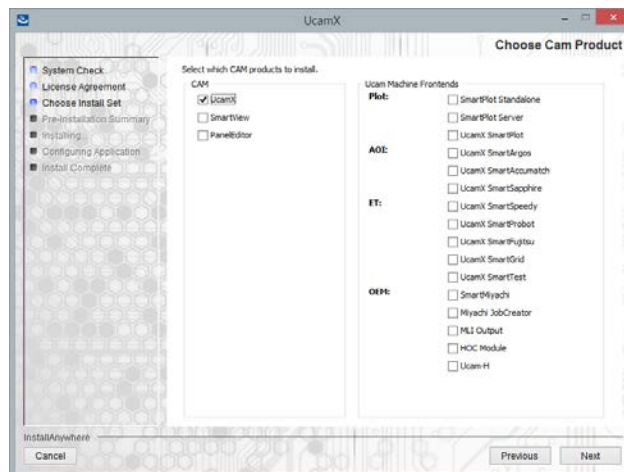
With every new CAM installation comes a new licence file and new or upgraded UCAMX users. You can install each of these 3 components separately, but make sure that each component has been installed before running the CAM product.

Install Set	Contains
CAM products	Allows you to install one or more Ucamco CAM products, including UCAMX various machine frontends for plotting, optical inspection and electrical test and OEM frontends At any time you can install any of the available software products in this installer. However, to be able to use the installed software, you need a valid license file.
License file	Allows you to install or update a license file .  Note: License files can also be requested and installed using the License Server Installer (see 1.3)
User account management	Allows you to enable the current user for UCAMX and to create or modify this user's Home directory.

- 1 Select one or more install sets
- 2 Click *Install* to continue

4.6 Choose CAM product

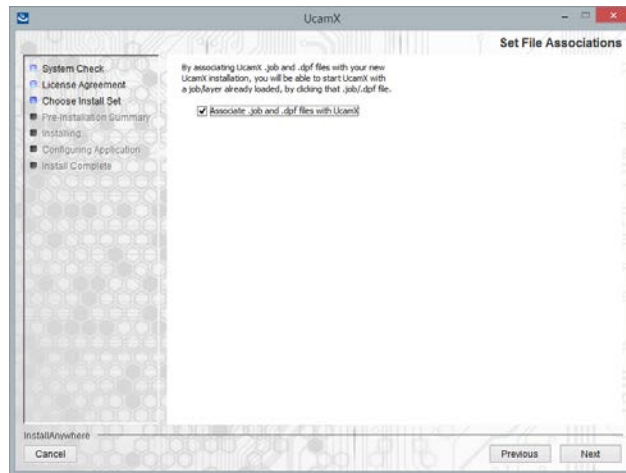
 **Note:** This screen is only displayed if you selected “Install CAM products”
In the **Choose CAM products** screen you can specify which CAM products to install.



- 1 Select one or more products to install
- 2 You can choose to install any of the available CAM products in this installer. However, to be able to use the installed software, you need a valid license file.
- 3 Click *Next* to continue

4.7 File Associations

UCAMX extensions like .job and .dpf can be associated to the UCAMX application.
Double clicking a file with this extension will open the file in UCAMX.



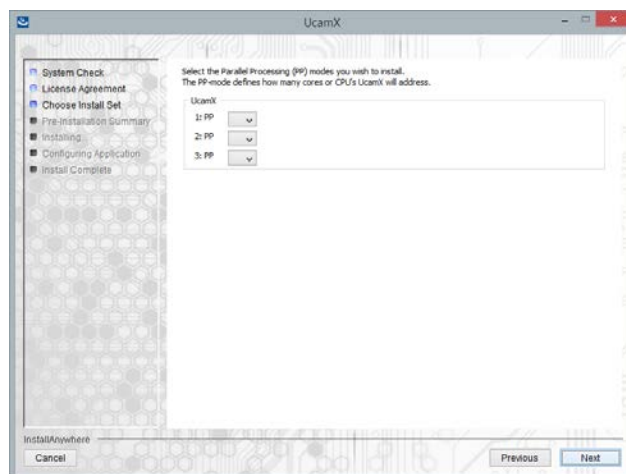
- 1 Check option to associate .job and .dpf extensions to Ucam
- 2 Click *Next* to continue

4.8 SELECT PARALLEL PROCESSING (PP) MODE

Select how many cores or CPU's Ucam will use on this computer.



Note: This dialog appears only for 64bit installer.



- 1 Select appropriate PP setting
- 2 Click *Next* to continue

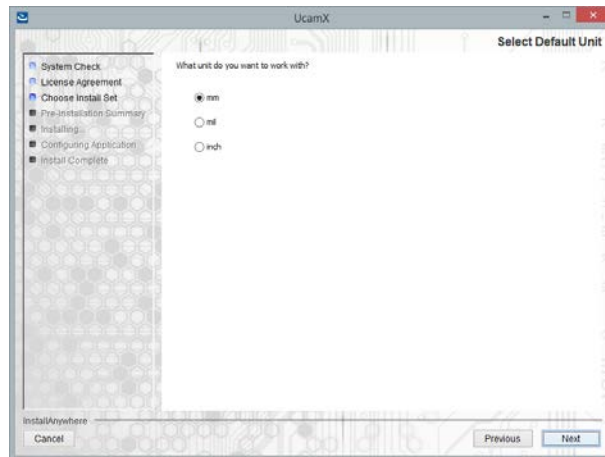
4.9 SELECT DEFAULT UNIT

Select which unit is used by default.

The selected option is stored in environment variable MT_UCAM_OPTIONS



Note: This screen will not appear if the environment was already set by a previous installation



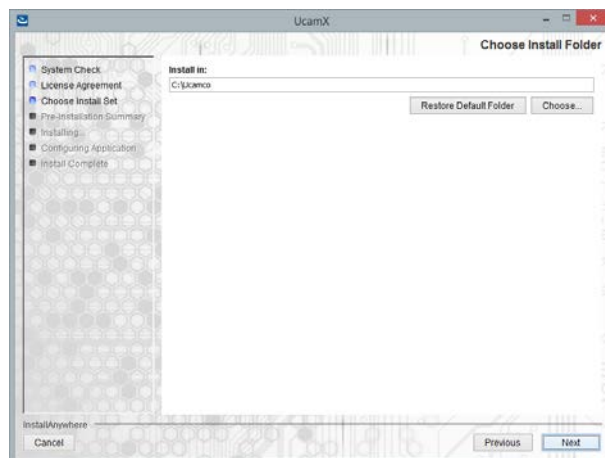
- 1 Select default unit
- 2 Click *Next* to continue

4.10 Choose Install Folder



Note: This screen is only displayed if you selected “Install CAM products”

In the **Choose Install Folder** screen you have to specify where to install the chosen components.



- 1 Specify the directory in which to install the chosen components by either
 - typing the path in the input field, or
 - clicking the *Choose* button, selecting the appropriate directory, and clicking the *Open* button in the file dialog box.

To restore the default path suggested by the installer, click the *Restore Default Folder* button.




Notes:

- For upgrades:** choose the existing UcamX directory
- For parallel versions:** choose a directory other than the one used for the previous installation
- Folder names:** we advise you to choose a path which does NOT contain spaces in the folder names

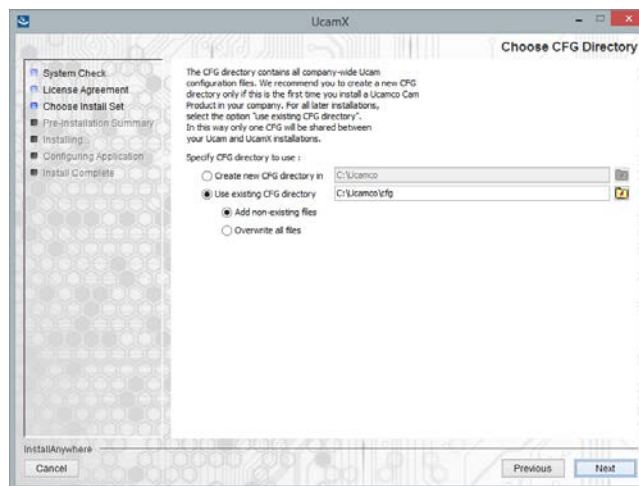
- 2 Click *Next* to continue

4.11 Choose CFG Directory

 **Note:** This screen is only displayed if you selected “Install CAM products”

In the **Choose CFG Directory** screen you have to specify where company wide configuration files for UcamX will be stored. UCAMX configuration files exist on three levels.


Level	Description
Dat	On this level configuration files are stored that are provided by Ucamco. These files may not be changed, in order to guarantee the correct functioning of UCAMX at all times.
CFG	These are the company wide configuration files which define some settings that are specific for your company and that are used for all your UCAMX installations.
Home	These are the settings that may differ for each UCAMX user.



Different procedures are recommended for a first-time installation and for an upgrade or a parallel installation.

4.11.1 First Install


To ensure that only one set of CFG configuration files exists in your company, we recommend that you install a new CFG directory only the first time you install UCAMX in your company.

- 1 Select *Create new CFG directory* button.
- 2 Specify the directory in which to install the CFG files by either
 - ❑ typing the path in the input field, or
 - ❑ clicking , selecting the appropriate directory and then clicking the *Open* button in the file dialog box.
- 3 Click *Next*.

4.11.2 Upgrade or Parallel Install


If you are upgrading a previous UcamX installation, or if you want to install the newer version alongside an existing installation, we recommend that you use the CFG configuration files of the existing installation.

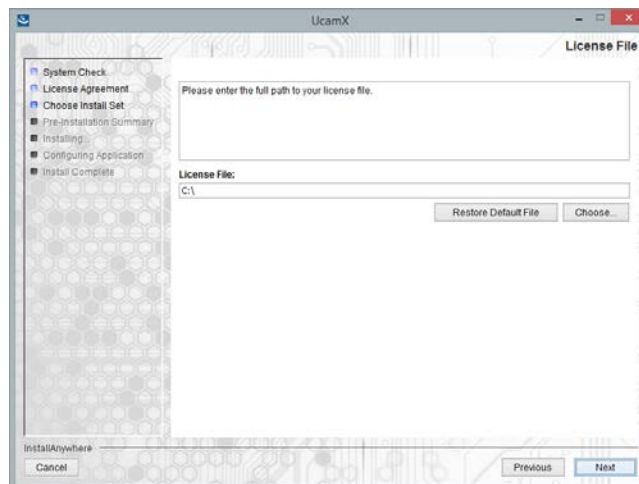
- 1 Select *Use existing CFG directory*

- 2 Specify the path to the existing CFG directory by either
 - ❑ typing the path in the input field, or
 - ❑ clicking , selecting the appropriate directory and then clicking the *Open* button in the file dialog box.
- 3 Select the appropriate option:
 - ❑ *Add non-existing files* will keep the configuration files from the previous installation and only add the new files.
 - ❑ *Overwrite all files* will replace the configuration files from the previous installation with the new files and add the files that are new in this version.
- 4 Click *Next*

A warning appears, indicating that you are overwriting an existing installation of UCAMX.
- 5 Click *OK* to continue
- 6 Click *Next*

4.12 Install License File

 **Note:** Please skip this section if you did not select the *License* option in the **Choose Install Set** screen.

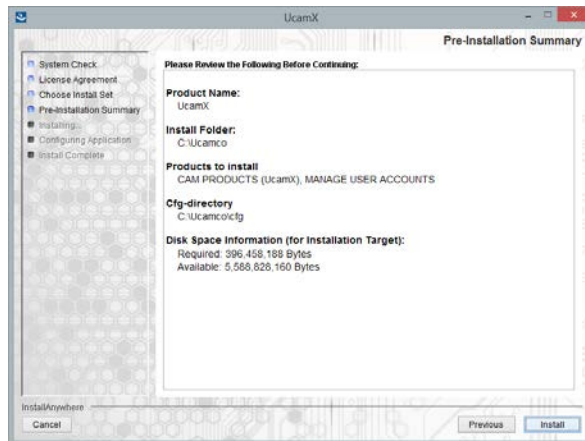


- 1 Specify the directory in which to install the chosen components by either
 - ❑ typing the path in the input field, or
 - ❑ clicking the *Choose* button, selecting the appropriate directory, and clicking the *Open* button in the file dialog box.

To restore the default path suggested by the installer, click the *Restore Default Folder* button.
- 2 Click *Next* to continue

4.13 Pre-Installation Summary

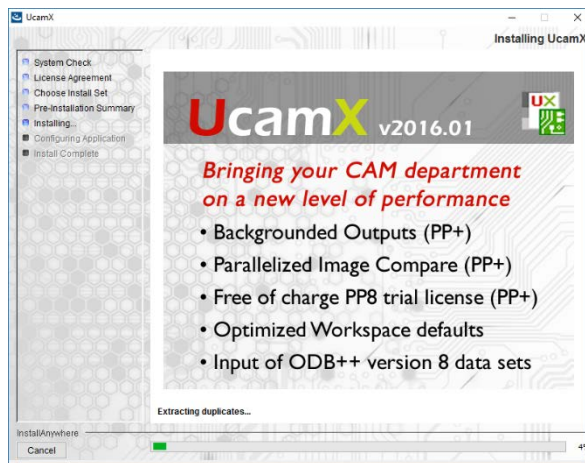
Before launching the actual installation you can review all selected options in the following summary screen:



Click *Install* to start the UcamX installation

4.14 Installation

During the installation some new UcamX features for this version are presented:



4.15 User Account Management

In the **User Account Management** screen you can create an (empty) UCAMX Home directory for the current user. If you want to add a Home directory for another user on this workstation, you have to log into Windows XP/VISTA/7/8 as that user and then run the installer again.

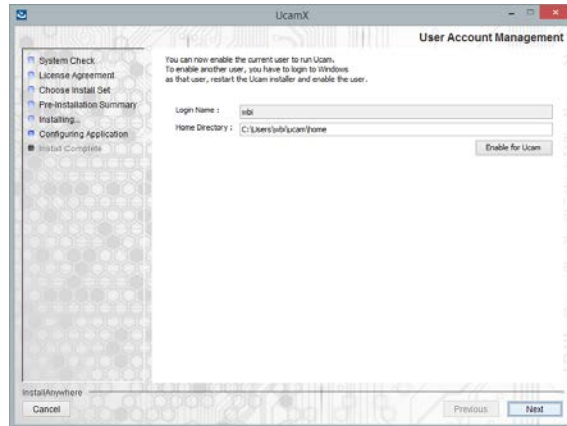
Case 1 - When upgrading / first install

If you are (re)installing a CAM product or a license, it is **highly recommended** that you also upgrade the current user by clicking *Enable for UcamX*. This ensures that all parameters and environment variables modified during installation will be set correctly.

If you do not do this, the current user may not be able to start up or use the installed v2016.x CAM product(s) correctly.

Case 2 - When installing versions in parallel

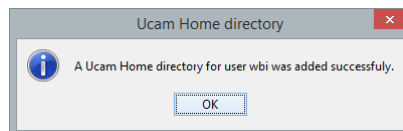
If you are installing a v2016.x CAM product in parallel with a previous version, and you want to continue using both versions, you should NOT upgrade the user that will use the previous CAM installation. This is because after enabling a user for version v2016.x, that user will no longer be able to use a previous CAM installation.



To enable the current user for UCAMX:

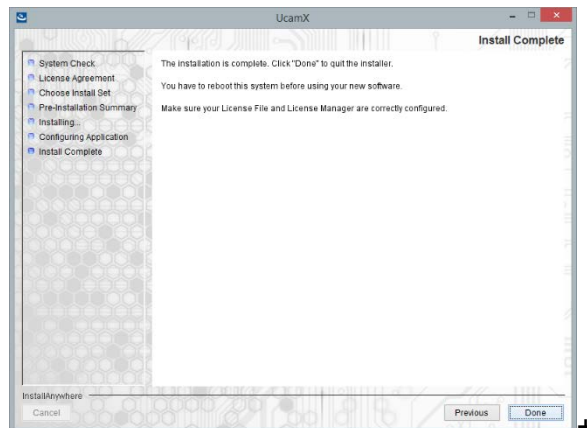
- 1 Specify the user you want to enable for UCAMX in the *Login Name* field.
- 2 Specify the home directory for this user in the *Home Directory* field.
- 3 Click *Enable for UCAMX*.

The following dialog appears.



- 4 Click *OK*
- 5 Click *Next* to continue

4.16 Install Complete



- 1 Click *Done* to quit the installer
If you installed a CAM product the **Release Notes** for this product are displayed.
- 2 Reboot your system to ensure that all changes made to your system during the installation process take effect.
- 3 You can start each of the installed CAM products for which you have a valid license by either double-clicking the shortcuts on your desktop, or selecting the CAM product from the Windows Start menu.
If an appropriate license has been installed, then the chosen application should start up correctly.

5 License Manager Troubleshooting

UCAMX uses the **FLEXlm** license system. The UcamX Installer is able to install the necessary License Files, but you can also do this manually, after having installed UcamX. In order to understand the way UCAMX licenses are used it is important to be familiar with the following terminology:

License server	A system that runs (or can run) the license software.
License client	This is a system that does not run the license software but requires a license server. The License File on this system has to be the same License File as the one on the License Server. If the License File has 3 server lines then all 3 servers and all clients must have identical License Files (only the Daemon path may differ).
Shared license	One license can be used on different systems. The system that uses the license locks it. As soon as this system frees the license, another system can use it.

5.1 Format of a License File

The license file is a file named `mb_license.dat`. The format of this License File is:

1 or 3 SERVER lines	<i>SERVER hostname MBVDHID=hostid [portnumber]</i>
1 DAEMON line	<i>DAEMON maniab daemonpath</i>
1 or more FEATURE/INCREMENT lines	See complete License File example below.

Example


```

    ▼ The server name ▼ The hostID ▼ The port number
SERVER mbpc01 MBVDHID=080AC852A856 1701
DAEMON maniab c:\mb\flexlm ◀ The daemon path
FEATURE g967001 maniab 7.000 30-DEC-2004 1 VENDOR_STRING=View SIGN=FEC4C9CED3FA
FEATURE g967002 maniab 7.000 30-DEC-2004 1 VENDOR_STRING=Edit SIGN=2700CFBC65D2
  
```

Editable Elements in a License File

Three data elements can be modified in the License File:

- Host names on SERVER lines
- Port numbers on SERVER lines
- Path name on the DAEMON line

 **Note:** Everything else is used to compute the encryption code and can only be changed by Ucamco personnel.

5.2 Manual installation of a License File

Use the following procedure:

- 1 Open an MS-DOS Window. (Select Start - Run then type CMD in the dialog box and press enter. This opens a Command Prompt.)
- 2 Type `set MANIAB_LICENSE_FILE`.
This returns a line starting with `MANIAB_LICENSE_FILE` and then the path where the current license can be found. Use either DOS or Windows Explorer to go to that indicated directory.
- 3 Make a safety copy of your current license.
- 4 Copy the new License File to the same location as your old License File and give it the same name.



Example: `copy customer.dat mb_license.dat`

- 5 Make sure that on the server line the following information is the same in both the old and new License File:

The host name
The host ID (the value next to MBVDHID)
The port number.

You can modify the host name and port number if required.

The Daemon name and path should be the same in both Daemon lines.

You can modify the path if required



Note: You cannot copy and paste information from the old license to the new one.

- 6 Reboot your computer.

5.3 License Management using LMTOOLS

LMTOOLS is a graphical user interface for the license manager that can help you during installation, de-installation and troubleshooting. This tool is automatically installed in the `..flexlm` directory and can be used at any time.

Some of the functions LMTOOLS performs include:

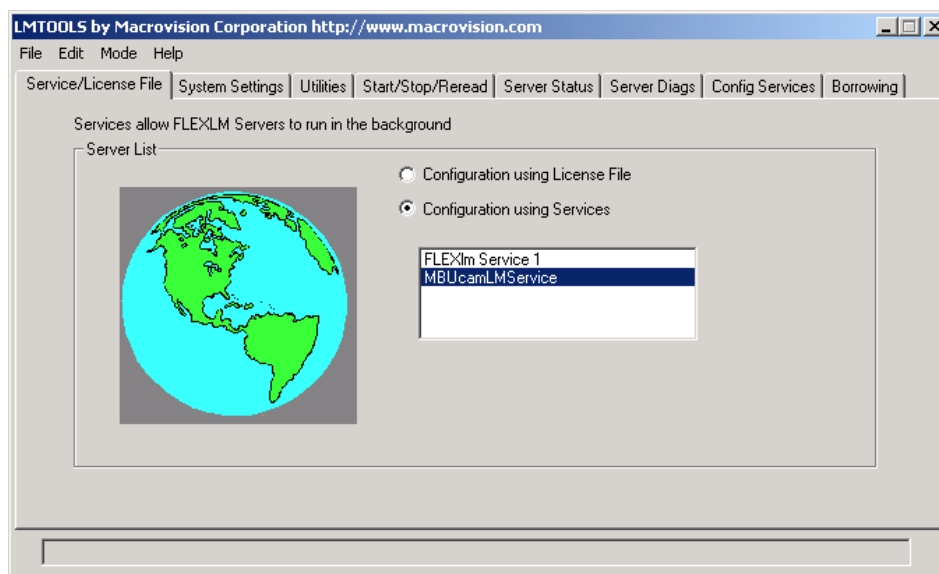
- starting, stopping, and configuring FLEXlm license servers
- viewing system information
- viewing server status

In order to use LMTOOLS on your license server you must have a License Manager Service installed. This is called the `MBUcamLMService` and can be found in the List of installed Services.

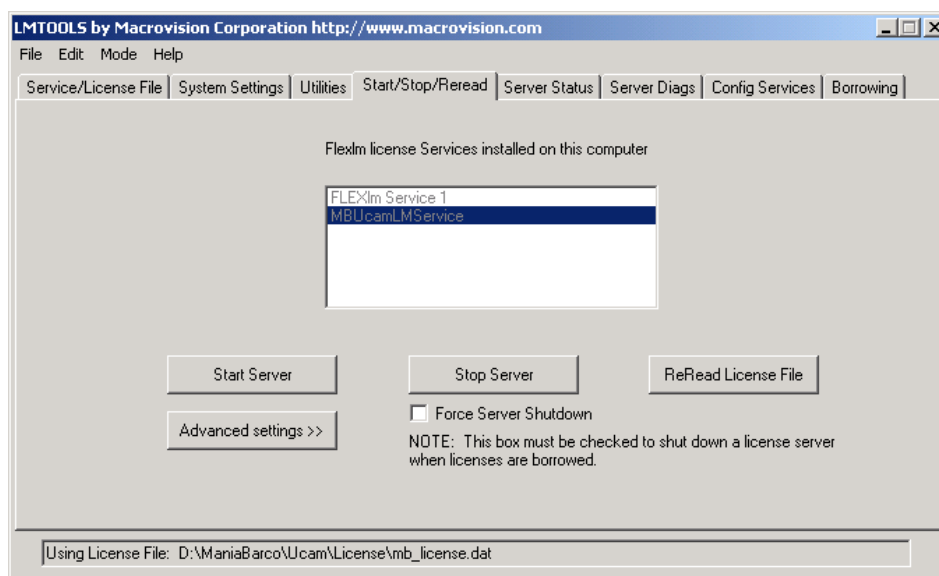
5.3.1 Manual Startup of License manager service

Once the license manager service (`MBUcamLMService`) is configured, you can stop and start this service using the LMTOOLS interface:

- 1 Start LMTOOLS.
LMTOOLS appears with the **Service/License File** tab displayed.



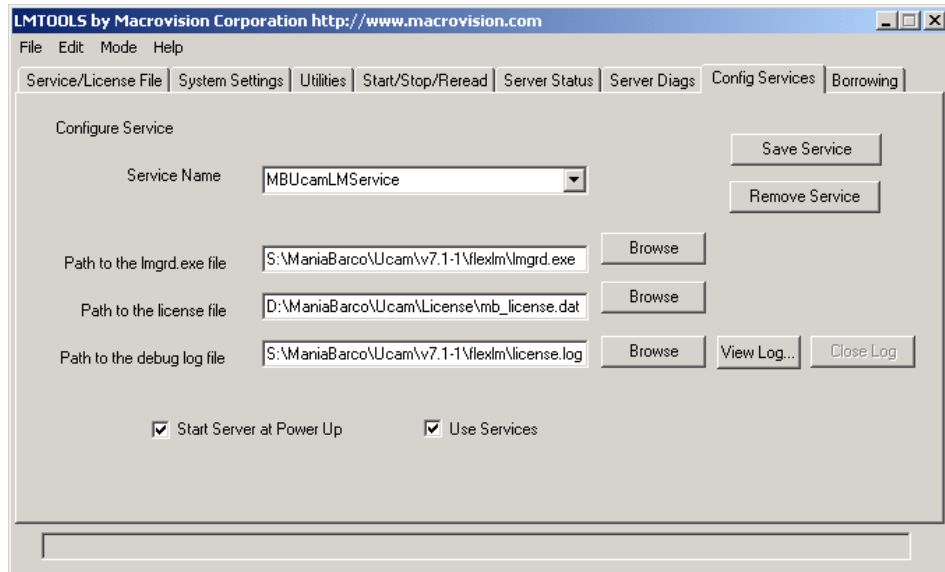
- 2 Select **Configuration using Services**.
- 3 Select the service name from the list presented in the selection box.
In this example, the service name is *MBUcamLMService*. This means that all following actions will affect the selected service *MBUcamLMService*.
- 4 Click the **Start/Stop/Reread** tab.



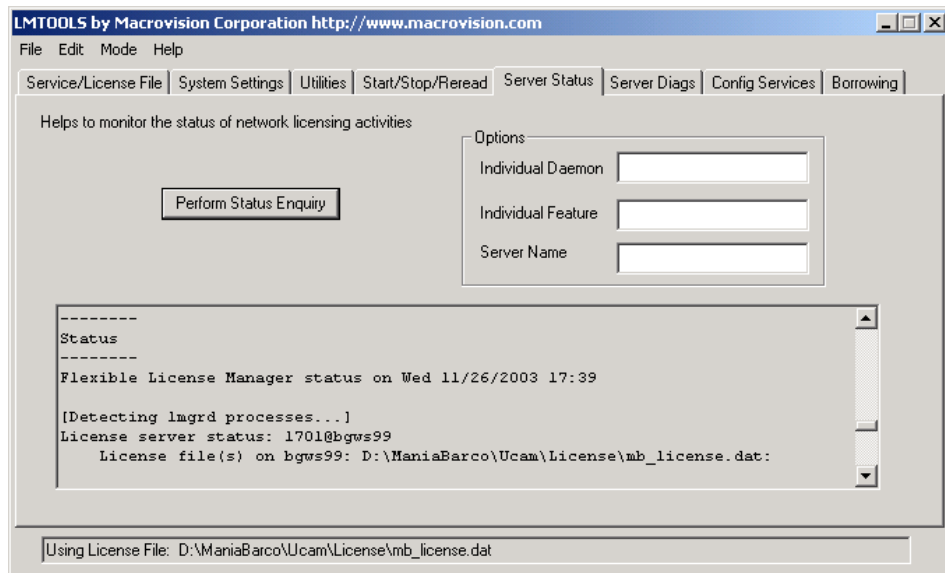
- 5 Start *MBUcamLMService* by clicking the [Start Server] button.
MBUcamLMService license server starts and writes its log output to the log file that was specified in the log field of the **Config Services** tab.

5.3.2 Checking the logfile

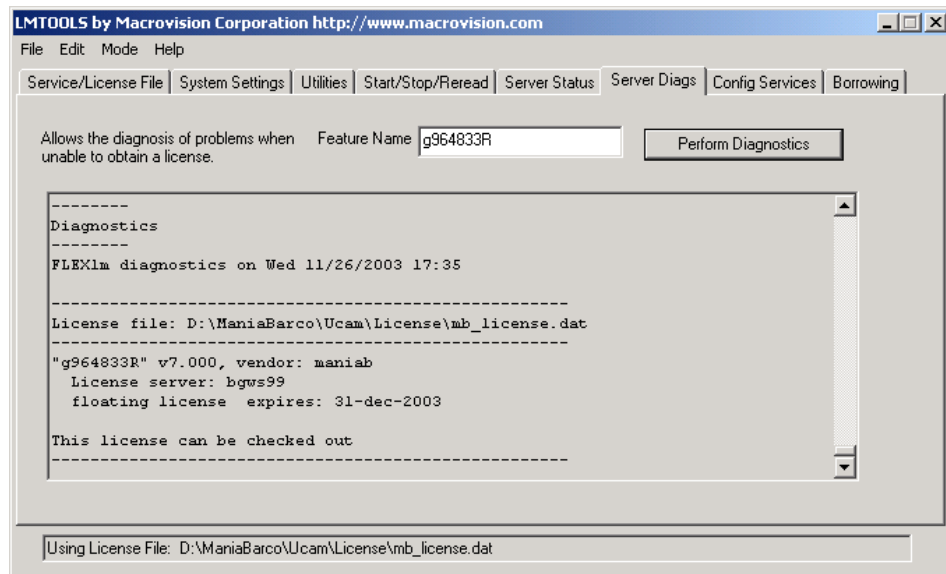
If you experience any problems with the License Manager, check the messages in the log file using the LMTTOOLS Utility.



- ❑ Use the [View log] button to see and the [Close Log] button to close the log.
- ❑ Use the [Server Status] tab to get more info.



- ❑ Or use the [Server Diagnostics] tab to get more info



If the problems persist, you can send your log files to you local Customer Care Contact.

5.4 LMTools Troubleshooting

5.4.1 License Manager Doesn't Start

Launch the LMTOOLS utility from `\<Install_Dir>\flexlm\` and use the "View_Log" option on the "Config Services" tab to view the log entries.

Verify that the License Manager is installed as a Windows Service (see 5.5) and that the instructions for automatic startup are taken into account (see 5.3.1).

If the Service is not running use the "Start Server" button on the "Start/Stop/Reread" tab.

When failed check the Server Status Tab page for messages why the action failed.

5.4.2 Locked License

If a license remains locked, you have two options.

- Exit UCAMX on all clients and reboot the license server.
- Exit UCAMX on all clients and launch LMTOOLS from `\<Install_Dir>\flexlm\`.
- Use the [Stop Server] and [Start Server] buttons on the **Start/Stop/Reread** tab to unlock the license.

5.4.3 Licensed Number of Users Already Reached

All available licenses are in use.

- Check by using the "Server Status" tab of LMTOOLS
 - If you have less UCAMS running than there are licenses in use, it may be that a system did not free its license (crash or power down without a shut down).
- Reboot the systems (if you have a server system with three servers in the License File, make sure that they are down together).

5.4.4 Encryption Code in License File Is Inconsistent

The License File is corrupt.

- ❑ This may be because the file was not correctly copied. (When using FTP, make sure you use Binary mode to transfer files)
- ❑ The version of the License Manager cannot read your License File. You must update the License Manager (install as license server: yes).
Call your local Customer Care Contact if you do not have a recent version.
- ❑ The License File pointed to by `MANIAB_LICENSE_FILE` is not the License File that was pointed to when the license server was started. You must restart the license server.

5.4.5 Invalid Host

- ❑ The hostname of the license server is not valid.
If you have more than one license server, check whether you are using the correct License File on this machine. In the case of 3 license servers grouped together all three servers must use the same license file.
- ❑ The License File may contain “any” as the hostname of the license server name. Change “any” to the host name of your server.

5.4.6 Cannot Find SERVER Hostname

If the server hostname cannot be located in the network database, please see the advice offered for Invalid Host above.

5.4.7 License Server Does Not Support this Feature

The License File used to start the License Manager is not the same as the one pointed to by `MANIAB_LICENSE_FILE`.

- ❑ Restart the server.
- ❑ The License File could also be corrupt. (see point 4.5.4)

5.4.8 License File Does Not Support this Version

The version of UCAMX is higher than the version of the License File.

Contact your local Customer Care Organization for help.

5.4.9 FLEXIm Bad System Date

The system has located some manipulations with the system dates on the UCAMX stations which are not permitted.

- ❑ Check the system date on the UCAMX workstation and change it back to today’s date.



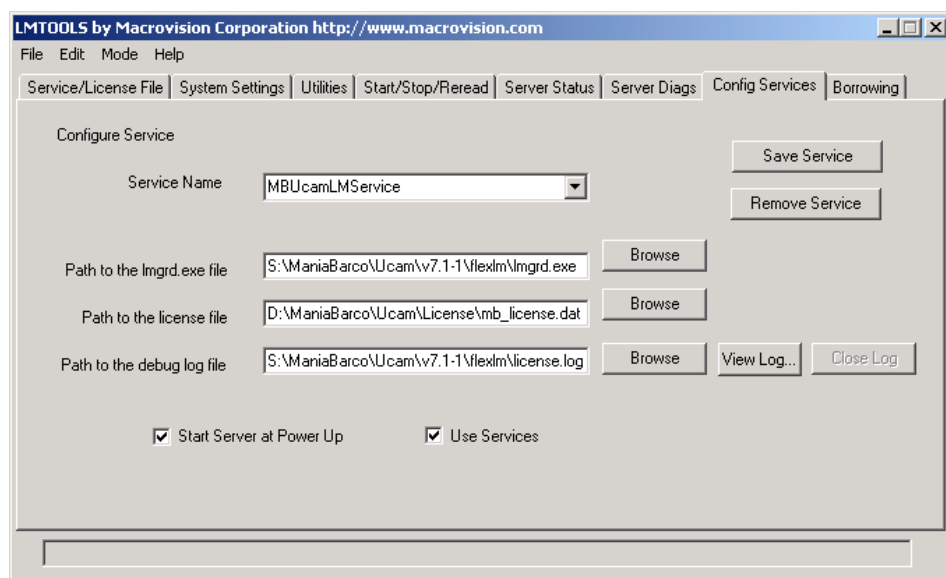
Note: If UcamX can’t be started, contact your Local Customer Care Contact for further assistance.

5.5 Configuring the License Manager as a Windows Service

The UCAMX Installer allows you to automatically install the License Manager as a Windows Service. If for some reasons you need to change the default setup or even manually (re-)install this Service you can use the LMTOOLS utility to do so.

To configure or install a License Manager as a service, you must have Administrator privileges:

- 1 Run LMTOOLS.
- 2 Click the *Configuration using Services* radio button, then click the **Config Services** tab.
- 3 In the Service Name, type the name of the service that you want to define, for example, *MBUcamLMService*.
- 4 In the *Path to the Imgrd.exe file* field, enter or browse to *Imgrd.exe* for this license server.
Path: **\<Install_Dir>\flexlm**
- 5 In the *Path to the license file* field, enter or browse to the license file for this license server.
Default Path: **\<Install_Dir>\ucam\env\cfg\mb_license.dat**.
- 6 In the *Path to the log file* field, enter or browse to the log file that this license server writes.



Make sure the *Start Server at Power Up* and the *Use Services* toggles are activated.

- 7 To save the new *MBUcamLMService* service, click the [Save Service] button.