

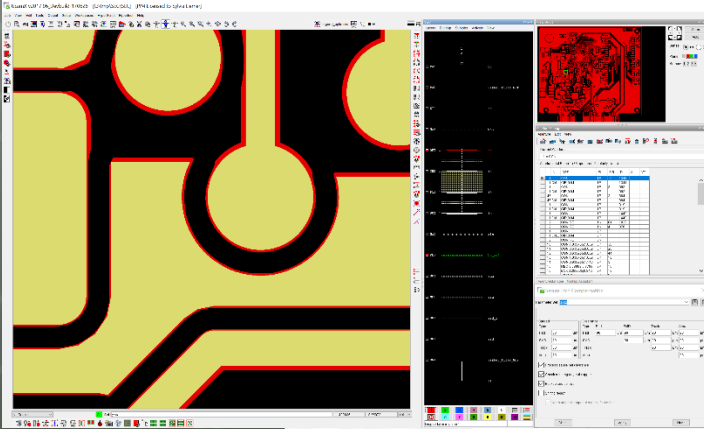
SOFTWARE

LASER PHOTO PLOTTERS

DIRECT IMAGERS

Secure Etch Compensation (SEC)

Yield improving etch compensation for all type of PCB boards



- Full compensation wherever possible, local correction to ensure minimal clearance
- Different compensation values for different feature types (Pads, SMD, Tracks and Areas)
- Different clearance values for different feature type combinations
- Easy-to-use interface - uncomplicated setup
- Store and reuse your SEC setups
- Original data saved for on-screen reference

MARKETS

- Rigid PCB Mfr ✓
- Flex PCB Mfr ✓
- Flex-Rigid PCB Mfr ✓
- HDI PCB Mfr ✓
- PCB Masslam Mfr ✓
- PCB Equipment Mfr
- PCB Traders
- PCB Designers
- PCB Test centers
- IC Packaging
- Chemical Milling
- High Resolution Graphic Arts
- Flat Panel Display

PRODUCT FAMILIES

- CAM ✓
- PreCAM and Engineering
- Electrical Test
- Equipment Front Ends
- Format Converters & RIP's
- OEM Software

Laser Photo Plotters
Direct Imagers

64 Bit

Multi Core

Full compensate with local corrections

Secure Etch Compensation (SEC) applies a full compensation wherever possible. Local corrections, applied to the copper spread, ensure a minimal overall clearance.

Compensation values by feature type

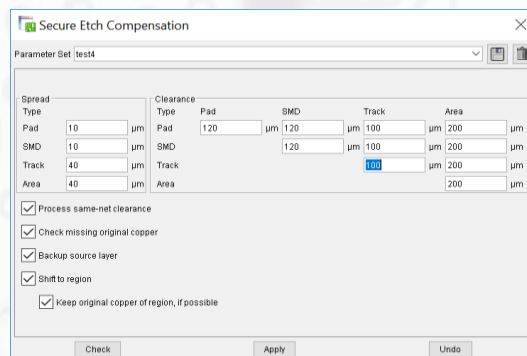
SEC enlarges the copper with different values depending on the object type (Pad, SMD, Track and Copper Area)

Clearance per feature type

The requested minimal clearance after compensation is configurable for every feature type combination: E.g. clearance Pads/Areas could be bigger than clearance SMD Pads/Areas

Easy-to-use interface

SEC has a user-friendly interface. Input of Spread and Clearance values is easy and intuitive.



Use of attributes to exclude elements

Certain items on the PCB may be excluded from compensation by marking them with a designated attribute.

Original data backup for easy on-screen reference

SEC offers a backup function to set aside a copy of the uncompensated layer for easy before/after visual comparison.

Maximize compensation on critical features

Some of the compensation on copper areas can be sacrificed locally to help achieve maximum compensation on nearby critical features like SMDs or Pads. If allowed, SEC can even cut back some of the area's original copper to create extra space...

Store and reuse your SEC setups

Different setups can be stored and reused based on your unique requirements like copper thickness, clearances, ...



SEC movie

Scan the QR code to see a short movie on how to use Secure Etch Compensation

Ucamco NV

Bijenstraat 19, 9051 Gent, Belgium

Tel: +32 9 216 99 00 - Fax: +32 9 216 99 12

E-mail: info@ucamco.com - Web: www.ucamco.com

Direct link to SEC page
on Ucamco's website



Gerber Format

Convey your design intent
from CAD to CAM

Support for:

- CAD netlist
- Nested Step & Repeat
- Fabrication documentation



Scan this QR code to find:

- Gerber format info
- Gerber Reference Viewer
- Gerber format Specification

For more information on any
of our products or services
please contact us:

Email: info@ucamco.com

Web: www.ucamco.com

Full compensation applied wherever possible - local correction performed to ensure minimal clearance

(Yellow = original copper | red = etch compensation)



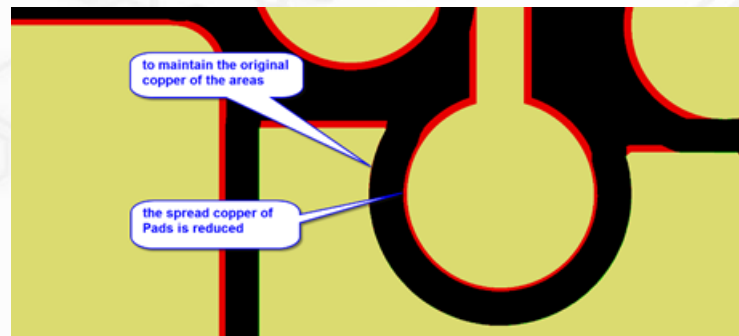
Area cut back to maximize compensation on nearby Pads

(Yellow = original copper | red = etch compensation | green = local copper area cut back)



Area not cut back – reduced compensation on nearby Pads

(Yellow = original copper | red = etch compensation)



Ucamco protects your Investments

Ucamco has a longstanding tradition of protecting its customer's investments.

SECURE ETCH COMPENSATION is no exception:

it seamlessly hooks in to your existing **UCAMX** installation and reuses all of the available software setups or precious automation that you have diligently gathered and carefully maintained over the years.

© Copyright Ucamco NV, Gent, Belgium

All rights reserved. No part of this document or its content may be re-distributed, reproduced or published, modified or not, in any form or in any way, electronically, mechanically, by print or any other means without prior written permission from Ucamco. The information contained herein is subject to change without prior notice. Revisions may be issued from time to time. This document supersedes all previous versions. Ucamco does not grant a license to the intellectual property contained in this document by publishing or otherwise providing it. The material, information and instructions herein are provided AS IS, without warranty of any kind. Ucamco does not warrant, guarantee or make any representations regarding the use, the inability to use or the results of the use of the information, representation or other affirmation of fact contained herein. Ucamco shall not be liable for any direct, indirect, consequential or incidental damages arising out of the use or inability to use the information contained herein. All product names cited are trademarks or registered trademarks of their respective owners.