

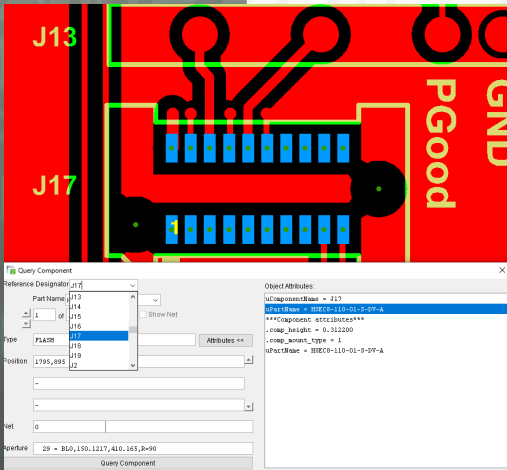
SOFTWARE

LASER PHOTO PLOTTERS

DIRECT IMAGERS

UcamX Assembly Seat

Input, Identify and output Component data



- View component types or specific components
- Input component data including
 - Reference designator and Part Name
 - Pin numbers
 - Reference net names
 - Additional component attributes
- Generate component BOMs, production documents and Pick&Place files
- Trace connections and reference net designators
- Trace components back to original schematic
- Determine pin numbers (with ref designator, land and ring size) and component orientation

MARKETS

Rigid PCB Mfr
 Flex PCB Mfr
 Flex-Rigid PCB Mfr
 HDI PCB Mfr
 PCB Masslam Mfr
 PCB Equipment Mfr
 PCB Traders
 PCB Designers
 PCB Test Centers
 PCB Assembly ✓
 IC Packaging ✓
 Chemical Milling
 High Resolution Graphic Arts
 Flat Panel Display

PRODUCT FAMILIES

CAM
 PreCAM and Engineering ✓
 Electrical Test
 Equipment Front Ends
 Format Converters & RIP's
 OEM Software

Laser Photo Plotters
 Direct Imagers

64 Bit

Multi Core

Easy input of Component information

Input is simple using the existing methods. No need for additional steps. New "component" layers are automatically added after selecting job and layers, The layers can be viewed or used to reference components.

Query Component and Package

New Query Component interface ensures uncomplicated selection of components. Selections can be based on Reference Designator, Part Name or Package Name. Alternatively simply click on a component and get detailed information on all the different component descriptions in one go.

Trace components back to original schematic

Compare net names of component pin numbers to schematics ensuring there are no conflicts or connection issues.

Query Pin and reference net

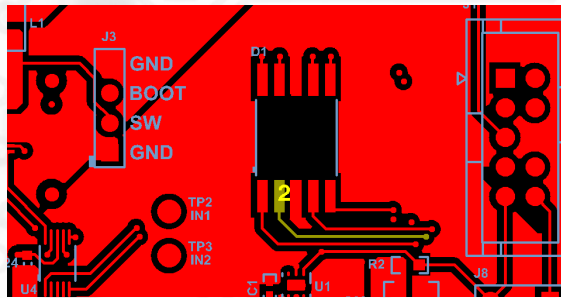
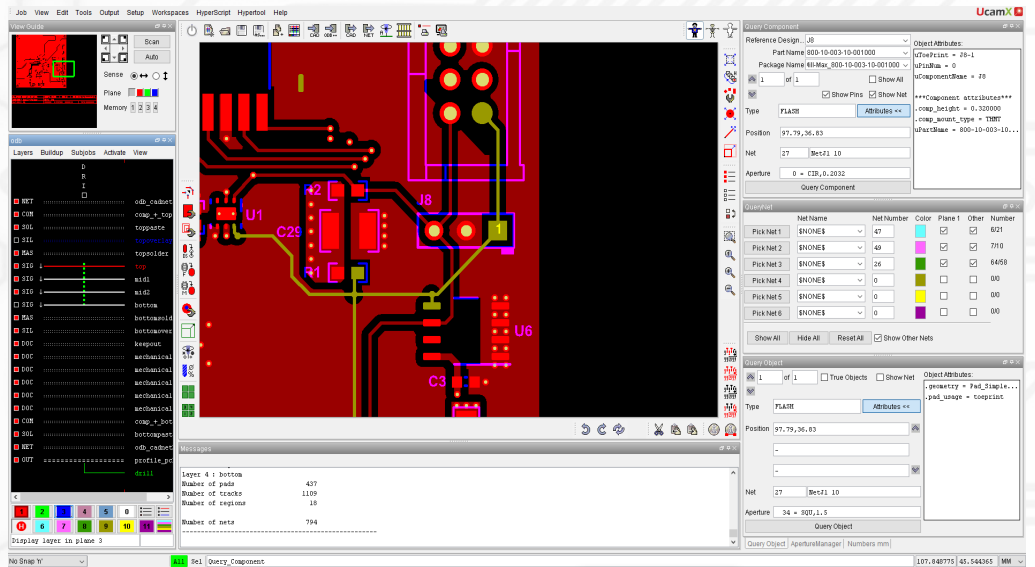
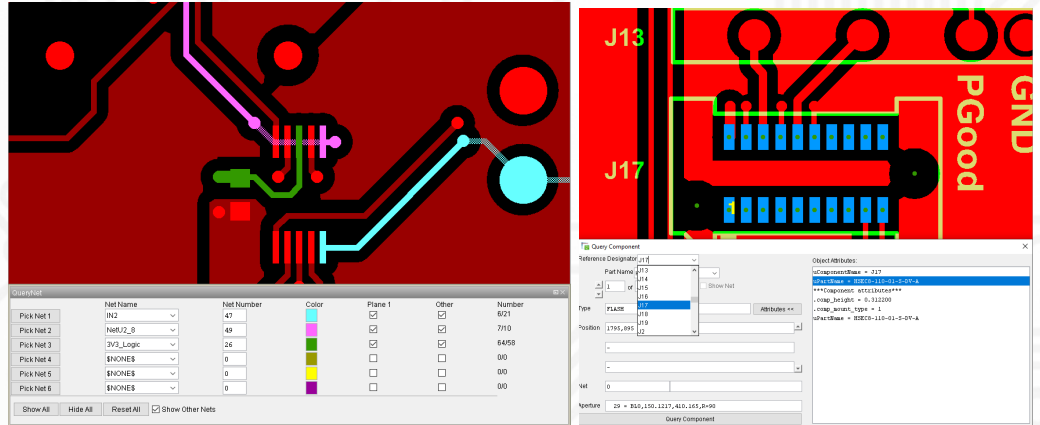
Hassle-free identification of pin numbers, land size or annular ring. In addition reference Net Names and Net Numbers are available for each component.

Generate BOMs and production documents

Custom BOMs and other custom production documentation created easily using Visual Hyperscript.

Automatic layout adjustments

Clear and well-arranged user interface



Direct link to the Assembly Seat Page



For more information on any of our products or services please contact us:
 Email: info@ucamco.com
 Web: www.ucamco.com

Gerber Format

Convey your design intent from CAD to CAM
 The Gerber format now offers support for
 CAD netlist, Nested Step & Repeat & Fabrication documentation



© Copyright Ucamco NV, Gent, Belgium

All rights reserved. No part of this document or its content may be re-distributed, reproduced or published, modified or not, in any form or in any way, electronically, mechanically, by print or any other means without prior written permission from Ucamco. The information contained herein is subject to change without prior notice. Revisions may be issued from time to time. This document supersedes all previous versions. Ucamco does not grant a license to the intellectual property contained in this document by publishing or otherwise providing it. The material, information and instructions herein are provided AS IS, without warranty of any kind. Ucamco does not warrant, guarantee or make any representations regarding the use, the inability to use or the results of the use of the information, representation or other affirmation of fact contained herein. Ucamco shall not be liable for any direct, indirect, consequential or incidental damages arising out of the use or inability to use the information contained herein. All product names cited are trademarks or registered trademarks of their respective owners.