

UcamX v2020.12



版本概述

总是优先一步.....

- DPMX导入 
- YELO 铜层校正器扩展
- 文字更新器 
- SEC尖角补偿 
- 自动属性标识扩展
- YELO字符校正器扩展
- YELO阻焊校正器 
- 更多.....

DPMX (IPC2581) 导入

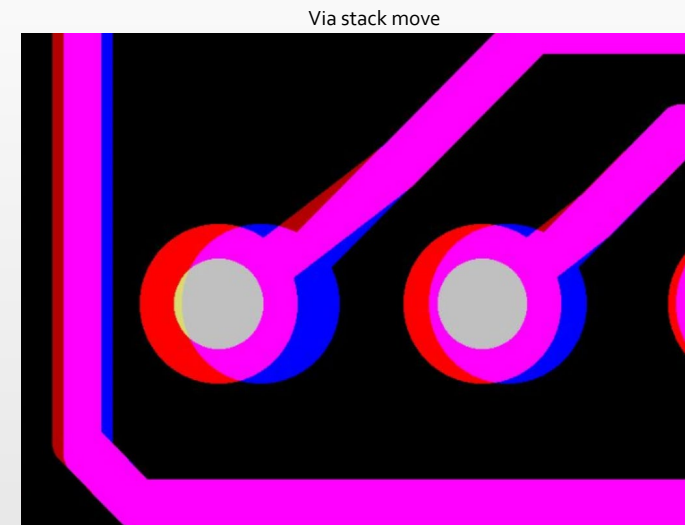
- 使用IPC-DPMX输入的新输入选项(以前称为IPC2581)保持数据格式的多样性。
- 即使是包含复杂数据和描述最复杂印刷电路板的大文件也可以顺利导入。
- 工业化导入也包括在新的Integr8tor发行版本。

(新选配功能)

扩展

- 新的自动化校正功能：过孔栈移动。
- 通过自动移动过孔及其相应的PAD来解决过孔间隙不足的问题。
- 多核并行处理提升了铜层处理效率30%左

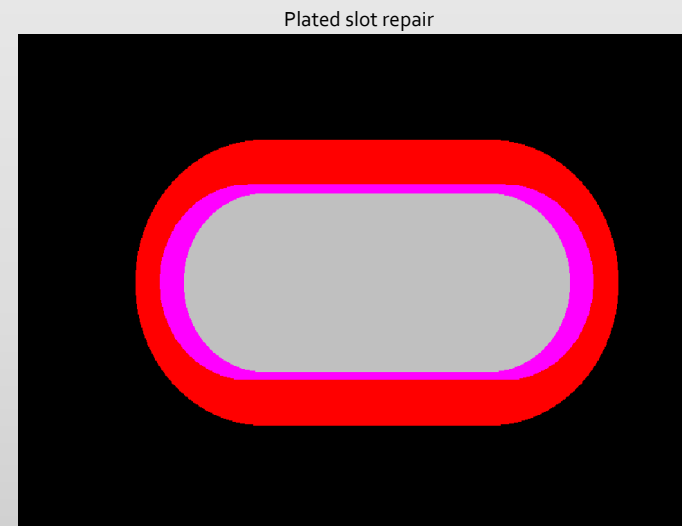
(现有铜层校正器功能的补充)



扩展

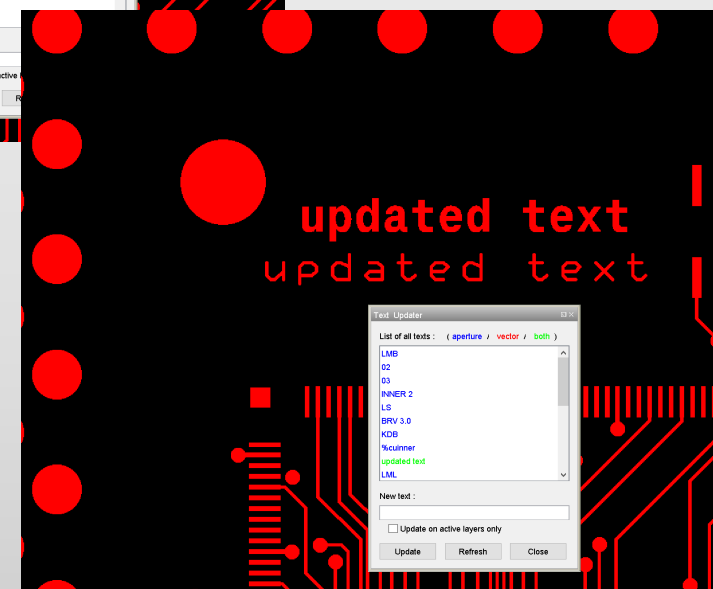
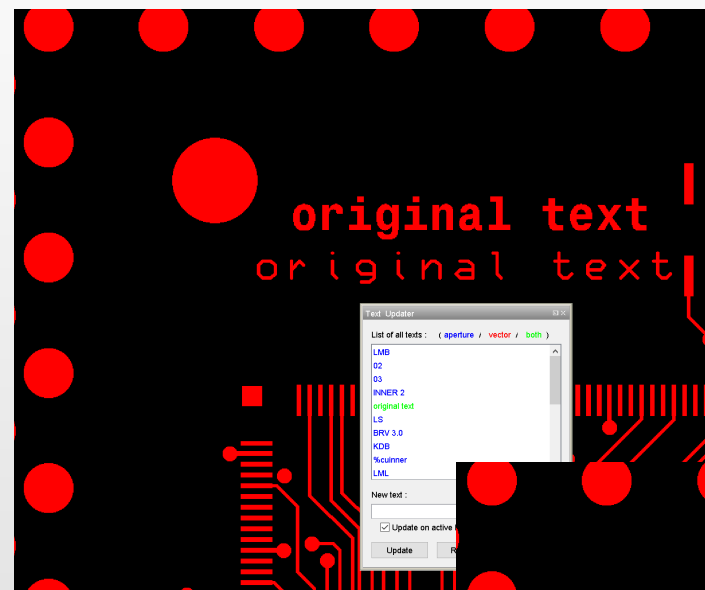
- 基于板子的复杂性，同网络间隙检查现在可以按常规参数值或更多的不同类型物件的相关参数值运行检查。
- 新的自动校正功能：技术槽孔修理。报告环宽不足的金属槽，并自动修理

(现有铜层校正器功能的补充)



- 添加了一个省时新功能，可更新所有层，选中层及层中所有级别块(block)的D码和矢量文字。

(维保期内免费使用)



安全蚀刻补偿

- 尖角补偿避免在SMD PAD尖角位蚀刻过度。
- 在安全蚀刻补偿功能中实现自动处理。

(新选配功能)

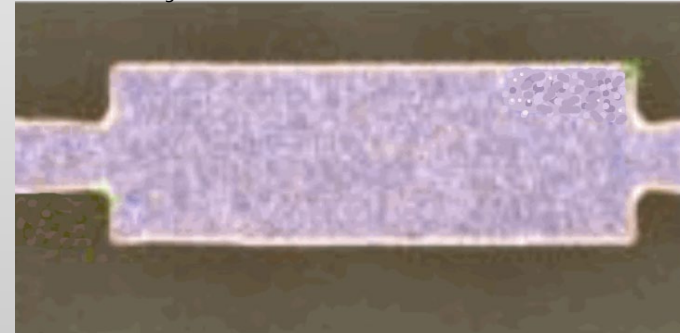
Horns in Layout



SMD with horns before etching



SMD after etching



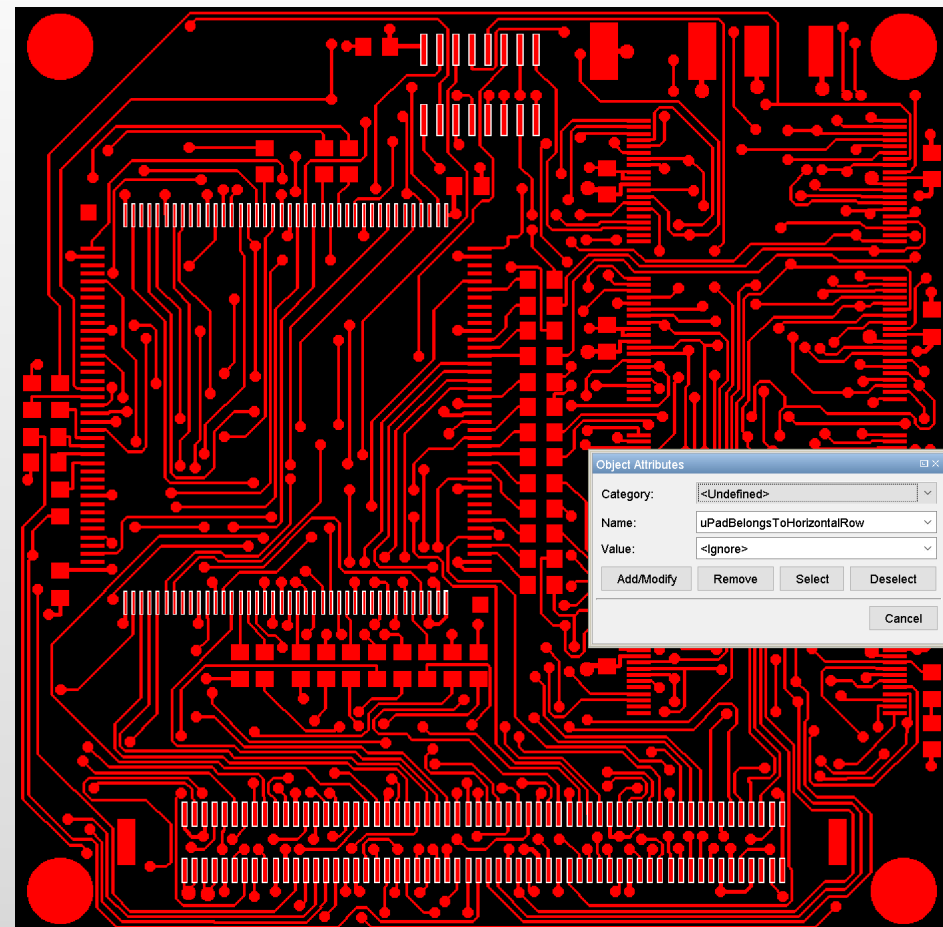
SMD after etching without horns



扩展

- 属性标识功能的扩展支持复杂D码并节省了CAM资源。
- 识别PAD中心距低于某个参数值的SMD PAD行。这个新功能已添加到属性标识功能中，从而使SMD PAD行的选择变得简单。

(现有属性自动标识功能的补充)



扩展

- 加速了YELO自动化
- 字符校正器中的线宽自动修理减少了手工作业。

(现有文字校正器功能的补充)

Text width adjustment



(Beta)

- 测试版-因更新了算法，最终将取代阻焊优化器(Soldermask Optimizer)。
- 试用测试-让您的专业知识与需求成为我们当前开发的一部分。

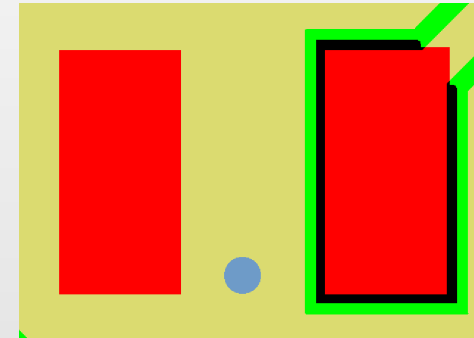
(在维保期内及有阻焊优化器license的客户可以使用)

阻焊盖帽处理（测试版）

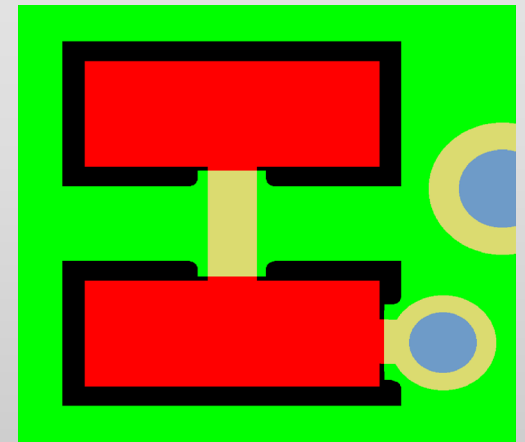
- YELO阻焊校正器包含有出色的盖帽处理，可以预防贴片时产生墓碑效应及焊料溢出。
- 阻焊校正对装配工艺有最积极的影响。

（新选配功能，仅对v2020.12发布的测试版有效）

Equalize copper area -
eliminate Tombstone effects



Solder Escape Prevention on
connected traces and to holes



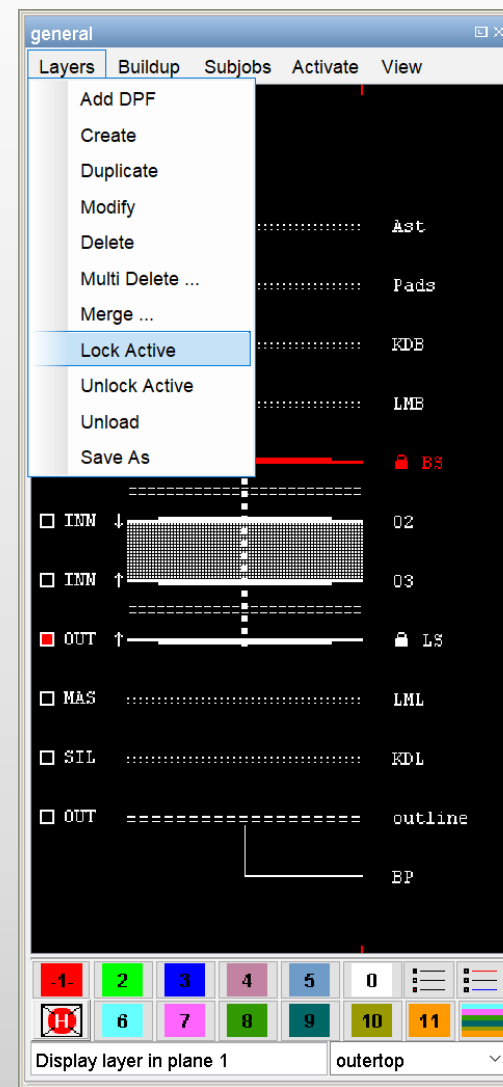
锁定层

- 提高安全性，当使用Job菜单的保存功能时，保护已保存的资料。

比如，模拟不同值或修改

- 层编辑的层菜单：已增加“锁定激活层”及“取消锁定激活层”功能项以便于快速轻易地操作。

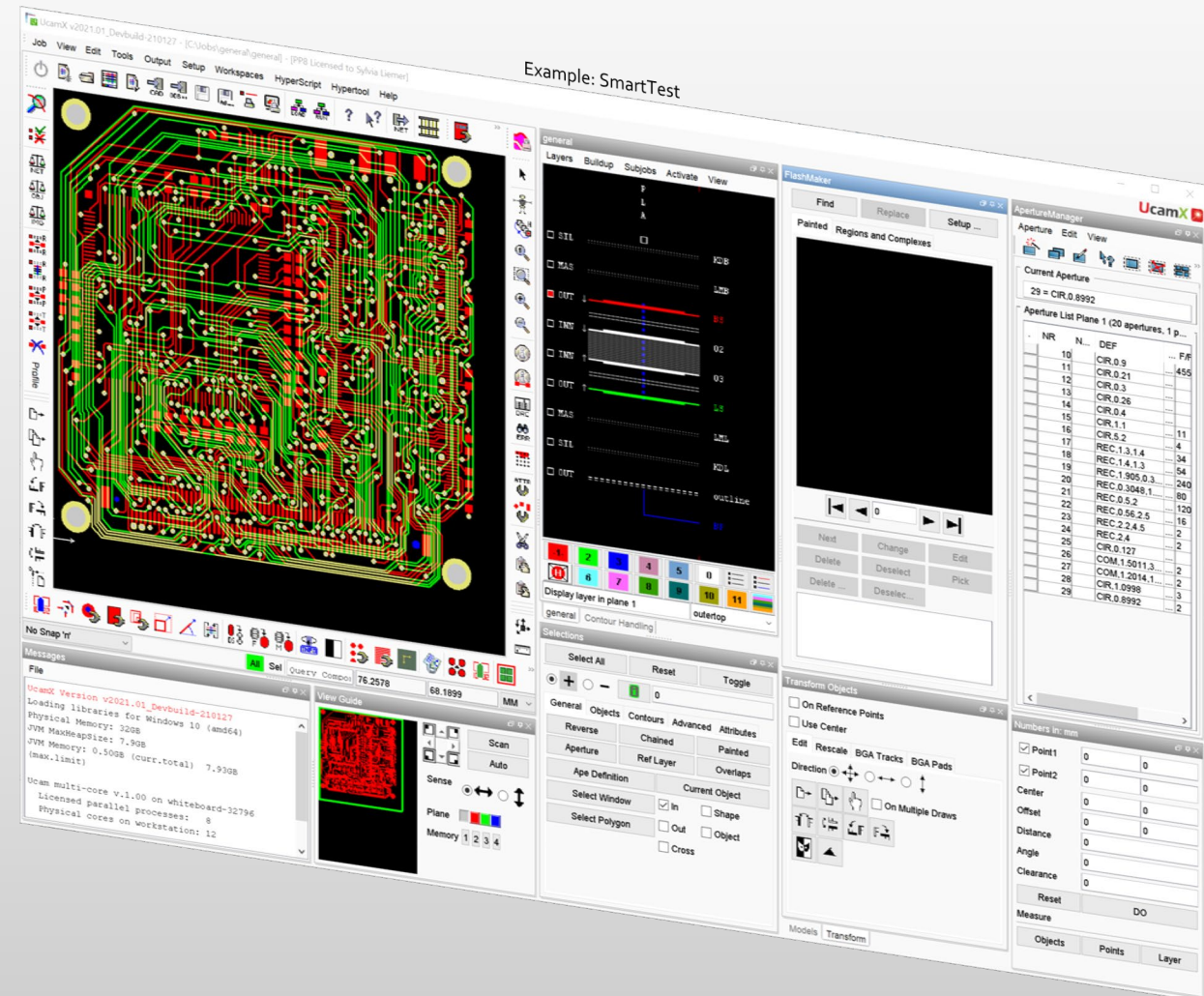
(现有的Job层编辑器功能的补充)



工作界面

- Smart产品(如SmartTest)的菜单已增加了Workspace菜单选项。
- Smart产品(如SmartTest)现在也可以使用优化的工作界面来完成一些操作行为。

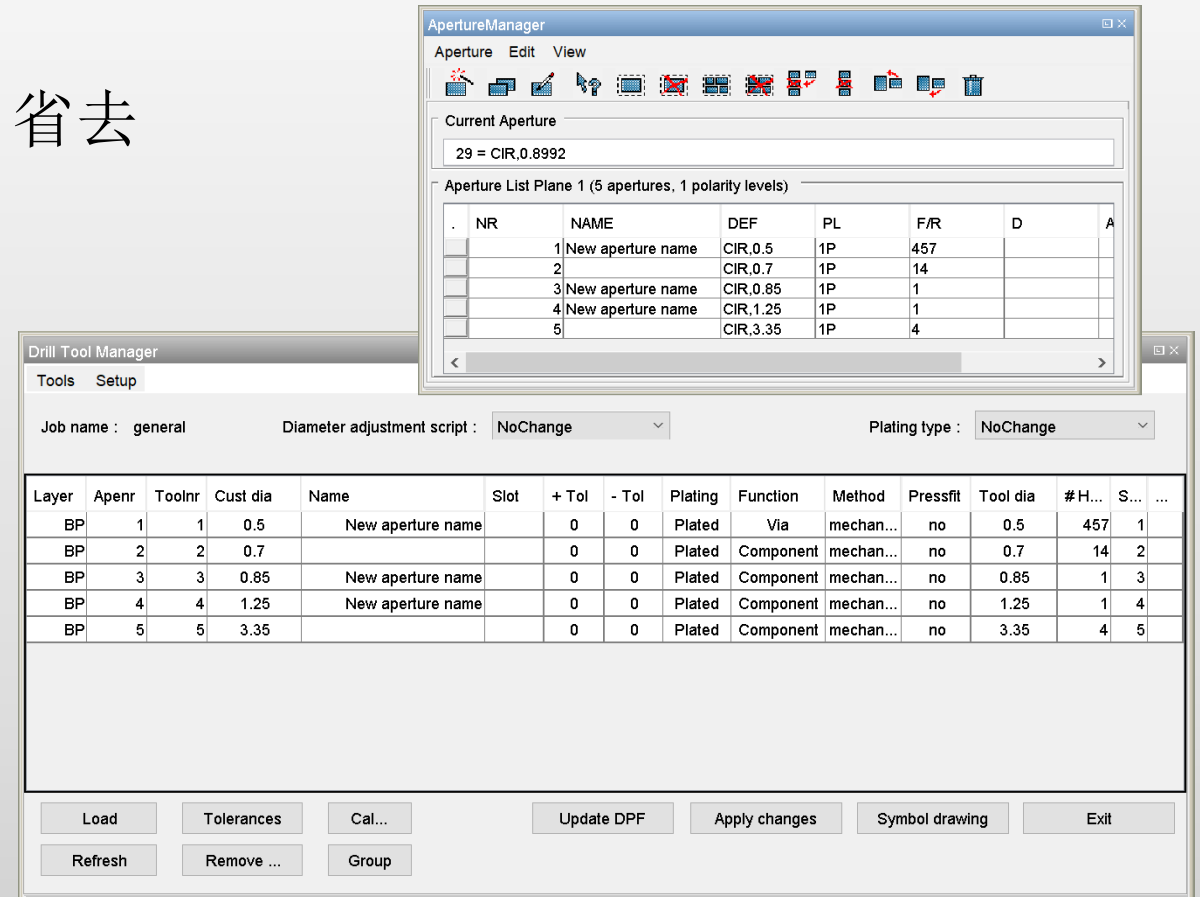
(现有Smart产品的补充, 如SmartTest)



扩展

- 钻头管理器里直接添加D码名称，省去手动添加D码名称。

(现有钻孔管理器功能的补充)



The screenshot displays two software windows. The 'ApertureManager' window shows a table of apertures with columns for NR, NAME, DEF, PL, F/R, D, and A. The 'Drill Tool Manager' window shows a table of drill tools with columns for Layer, Apenr, Toolnr, Cust dia, Name, Slot, + Tol, - Tol, Plating, Function, Method, Pressfit, Tool dia, # H..., S..., and ...

NR	NAME	DEF	PL	F/R	D	A
1	New aperture name	CIR,0.5	1P	457		
2		CIR,0.7	1P	14		
3	New aperture name	CIR,0.85	1P	1		
4	New aperture name	CIR,1.25	1P	1		
5		CIR,3.35	1P	4		

Layer	Apenr	Toolnr	Cust dia	Name	Slot	+ Tol	- Tol	Plating	Function	Method	Pressfit	Tool dia	# H...	S...	...
BP	1	1	0.5	New aperture name		0	0	Plated	Via	mechan...	no	0.5	457	1	
BP	2	2	0.7			0	0	Plated	Component	mechan...	no	0.7	14	2	
BP	3	3	0.85	New aperture name		0	0	Plated	Component	mechan...	no	0.85	1	3	
BP	4	4	1.25	New aperture name		0	0	Plated	Component	mechan...	no	1.25	1	4	
BP	5	5	3.35			0	0	Plated	Component	mechan...	no	3.35	4	5	

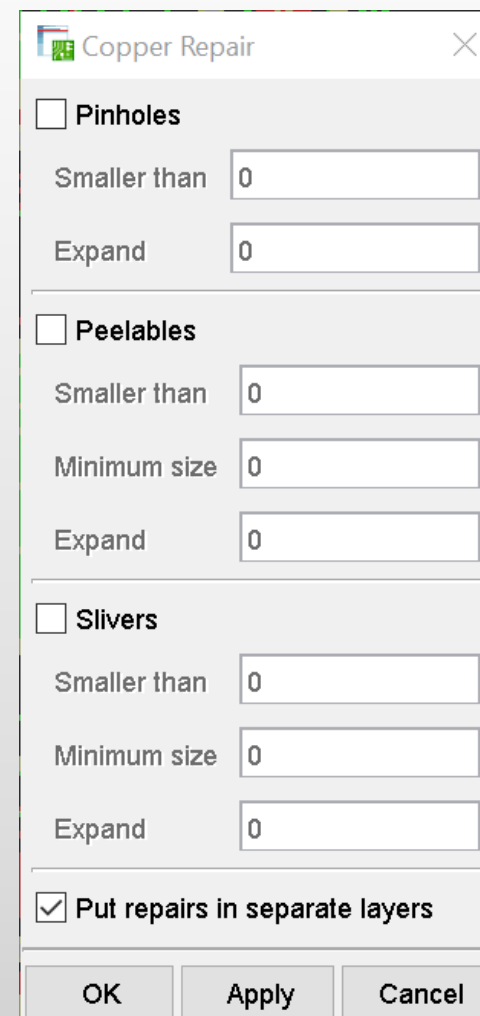
扩展

- 决定权在您手里！
可选的新选项：

-将修理放在独立的层便于使用前检查。

-直接将修理加入到工作层。

(现有铜修理功能的补充)



The image shows a software dialog box titled "Copper Repair". It contains three sections, each with a checkbox and three input fields:

- Pinholes**
 - Smaller than: 0
 - Expand: 0
- Peelables**
 - Smaller than: 0
 - Minimum size: 0
 - Expand: 0
- Slivers**
 - Smaller than: 0
 - Minimum size: 0
 - Expand: 0

At the bottom, there is a checked checkbox: **Put repairs in separate layers**. Below this are three buttons: "OK", "Apply", and "Cancel".

扩展

- 如果LPD文件在ODB结构中存在，更多关于LPD属性的详细信息现在已按照层属性添加了。
- 新的ucam.db参数的使用会作用在负性图层的转换。导入有极性的ODB++数据会根据您的要求转换图形。

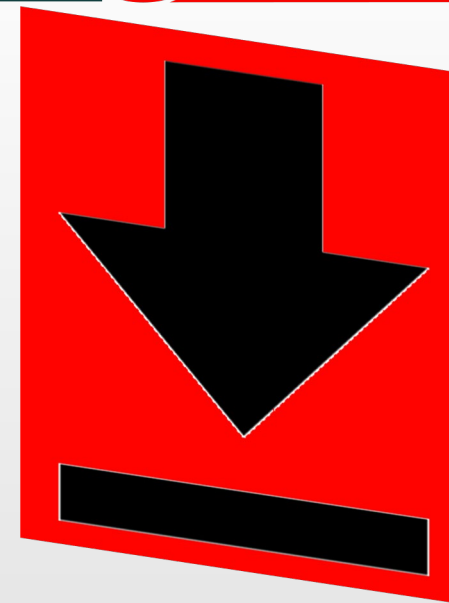


(现有ODB++导入的功能补充)

安装 v2020.12



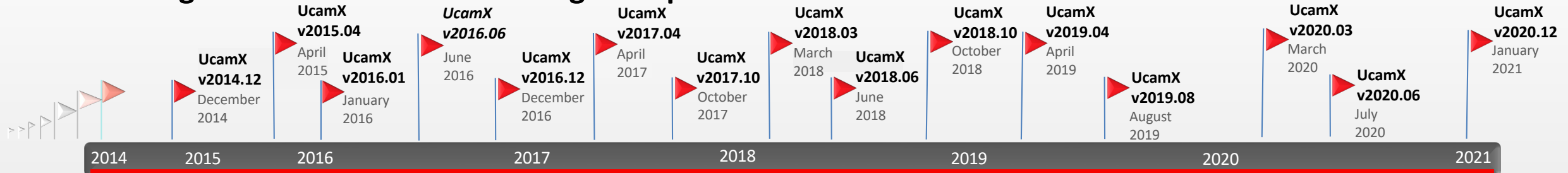
- 安装包可以从Ucamco公司的FTP服务器上下载。由于大多数的网页浏览器已停止了FTP下载支持，我们推荐你使用FTP客户端下载。
- 感谢您选择使用Ucamco产品。
- 我们建议您尽快安装这个更新版本。
- 如果您有任何问题，欢迎联系我们当地的业务合作伙伴或Ucamco技术支持人员。
- 欢迎关注Ucamco微信公众号(如右图)。



提供定期更新服务



Serving our customer base with regular updates



Version	Release date	Highlights
2014.12	Dec-14	Workspace GUI, Parallel processing
2015.04	Apr-15	Load balanced sessions, Gerber X2 Input support
2016.01	Jan-16	Background output, Parallelized image compare
2016.06	Jun-16	Maintenance update
2016.12	Dec-16	New insert Arc command, Improved Sieb&Meyer rout import
2017.04	Apr-17	Performance boost DRC copper-cut-ins, Improved "Select Painted" feature
2017.10	Oct-17	New startup routine, Extended Job Editor View, Optimized Rout Compensation
2018.03	Mar-18	Eagle input with proportional font, Scaled line width in Silk optimizer, Introduction of YELO Signal Layer Adjuster
2018.06	Jun-18	Save jobs by creating archives, free trial period of all YELO modules
2018.10	Nov-18	Query Component, Read Component information from ODB++
2019.04	Apr-19	YELO Combined GUI for all copper layers, New YELO functionality, Rout Manager enhancements
2019.08	Aug-19	Keyboard Shortcuts, Plane Focus Indicator, Maintenance update
2020.03	Mar-20	Upgraded to Java 11, New Select Painted algorithm, New YELO functionality, Gerber X3 input (component information)
2020.06	Jul-20	Verification of unique combination of subclass, attach and index number
2020.12	Jan-21	DPMX Import, Text Updater, Line width adjustment in YELO Legend Adjuster, Via pad stack move in YELO Copper Adjuster

▲ Today

© Copyright 2021 Ucamco NV, Gent, Belgium. All rights reserved.

This material, information and instructions for use contained herein are the property of Ucamco NV. The material, information and instructions are provided on an AS IS basis without warranty of any kind.

Ucamco NV does not warrant, guarantee or make any representations regarding the use, or the results of the use of the software or the information contained herein.

Ucamco NV shall not be liable for any direct, indirect, consequential or incidental damages arising out of the use or inability to use the software or the information contained herein.

The information contained herein is subject to change without prior notice.

Revisions may be issued from time to time to advise of such changes and/or additions.

No part of this presentation may be reproduced, stored in a data base or retrieval system, or published, in any form or in any way, electronically, mechanically, by print, photoprint, microfilm or any other means without prior written permission from Ucamco NV.