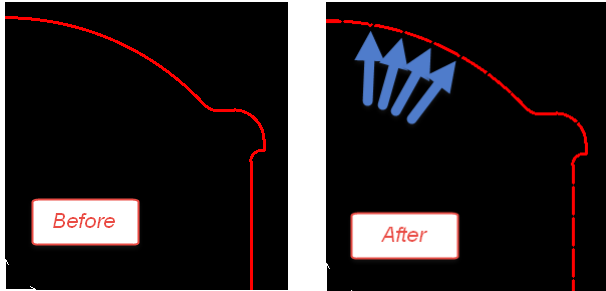


VHS script: insertOpenings.vhs

This script creates a 0.2mm opening every 10mm on every draw and arc of a layer.

The size and the space between the holding webs can be changed to your requirements.

A very useful tool e.g. for cutting foils or thin laminates.



The script can be used in 3 ways:

- directly with Visual Hyperscript Editor,
- placed in the Visual Hyperscript Menu
- placed as an icon on a toolbar


For help or further information please contact us at support@ucamco.com

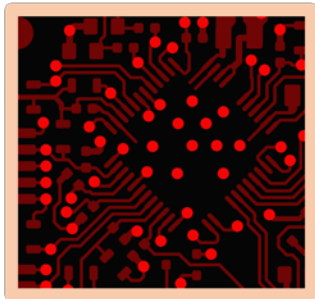
VHS script: model_contour.vhs

This script supports the user in converting contour pads into COMplex pads.

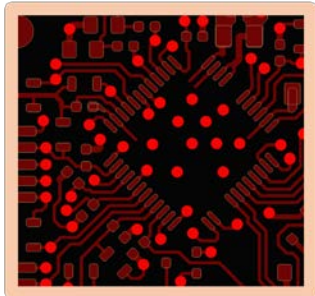
- Place this script with “Loop” activated in the Visual Hyperscript Menu.



- Activate the layer you want to work on
- Click the Highlight Pads button  to highlight the pads in light red



- Start the script from the Visual Hyperscript Menu
It will select all contours and ask to define the pads



- Click on the pads and every pad with the same definition will be remodeled to COMplex pads and immediately show up in light red.

Layout after 2 clicks



For help or further information please contact us at support@ucamco.com