

UcamX v2020.03 Release Notes

Commitment to regular updates



Version	Release date	Highlights	Today
2014.12	Dec-14	Workspace GUI, Parallel processing	
2015.04	Apr-15	Load balanced sessions, Gerber X2 Input support	
2016.01	Jan-16	Background output, Parallelized image compare	
2016.06	Jun-16	Maintenance update	
2016.12	Dec-16	New insert Arc command, Improved Sieb&Meyer rout import	
2017.04	Apr-17	Performance boost DRC copper-cut-ins, Improved "Select Painted" feature	
2017.10	Oct-17	New startup routine, Extended Job Editor View, Optimized Rout Compensation	
2018.03	Mar-18	Eagle input with proportional font, Scaled line width in Silk optimizer, Introduction of YELO Signal Layer Adjuster	
2018.06	Jun-18	Save jobs by creating archives, free trial period of all YELO modules	
2018.10	Nov-18	Query Component, Read Component information from ODB++	
2019.04	Apr-19	YELO Combined GUI for all copper layers, New YELO functionality, Rout Manager enhancements	
2019.08	Aug-19	Keyboard Shortcuts, Plane Focus Indicator, Maintenance update	
2020.03	Mar-20	Upgraded to Java 11, New Select Painted algorithm, New YELO functionality, Gerber X3 input (component information)	



Java 11

UcamX is now built on OpenJDK Java v11

- Avoids payment of Java license fee to Oracle
- Supports 4K resolution screens
- Keeps your software future-proof



New select painted

A far more accurate new algorithm to select painted regions

- Saves lots of tedious manual work



YELO Copper Adjuster, new functionality

Partial track move for track to track clearances

- Solves more clearance problems automatically

Automatic removal of small copper regions

- Eliminates a manual operation

Shaving after ring optimization

- Higher yield



YELO Legend Adjuster, new functionality

Automation of adjustments via Text Move, Expand/Shrink frames, Clip

- Less manual work



Gerber X3 Input

Import component information for assembly in the emerging X3 standard

- Supports creation of manufacturing tools like stencils
- Visualize component placement



Rout Manager

Preview compensated rout layer

- Generates a virtual view allowing to check the exact rout path like it would be on routing machines



Eagle Input

New key for setting the default Input path

- No waste of time with searching for the input path



7-zip

Upgraded to the latest version

- A number of rare but dangerous bugs are fixed



Tiff Input

Faster Tiff input algorithm

- Saves a lot of waiting time

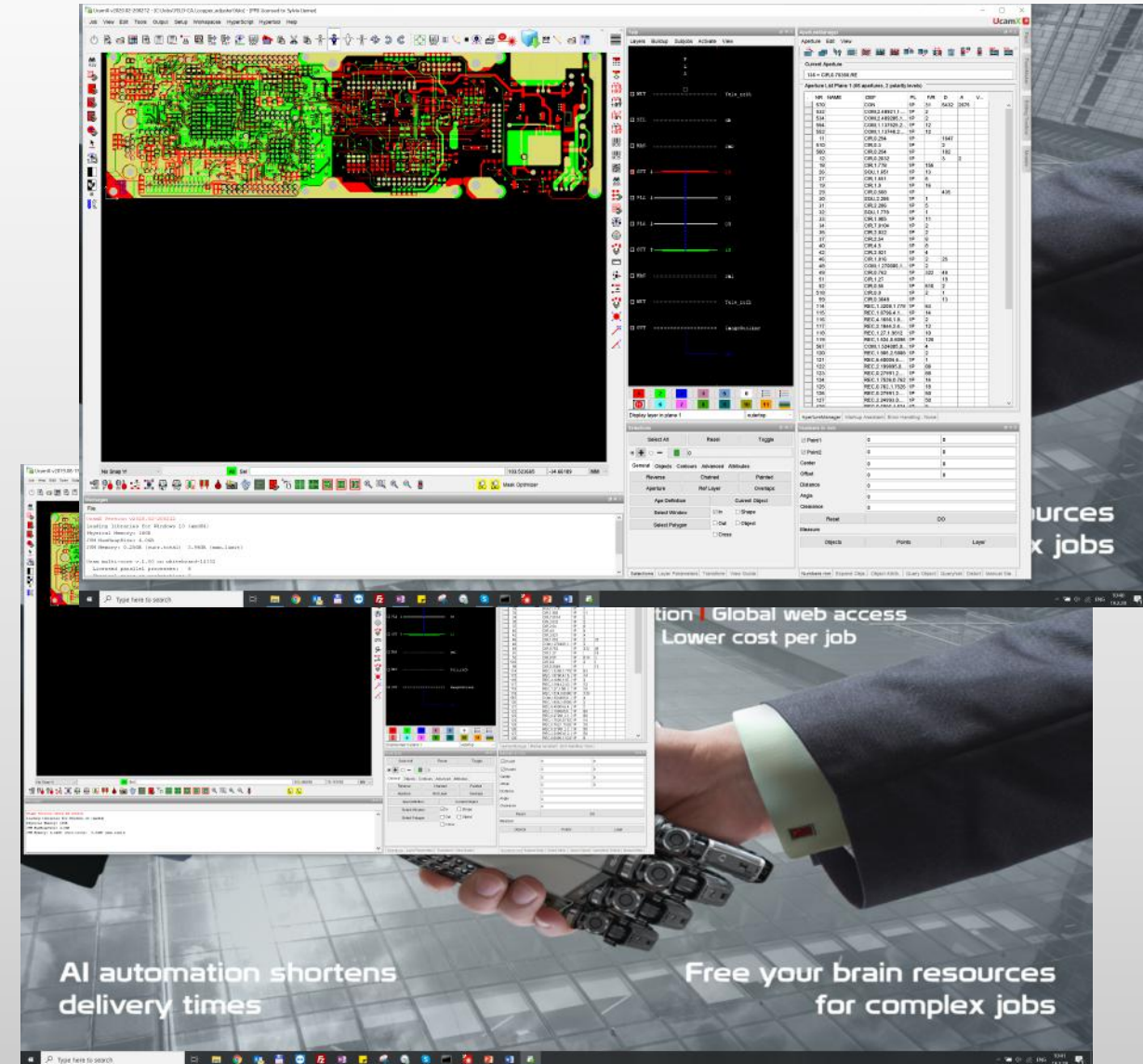
UcamX v2020.03 Release Notes



Java 11

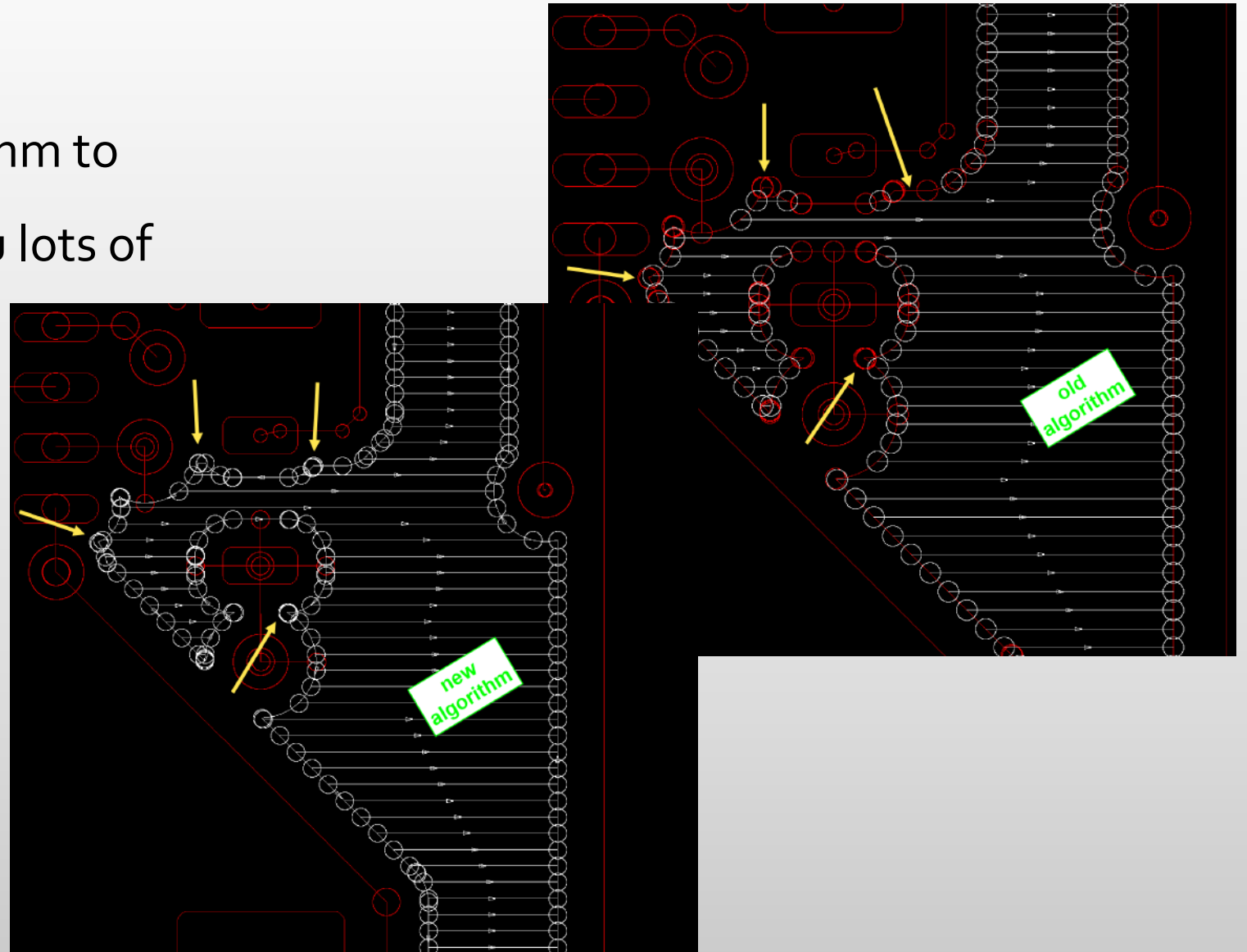
UcamX is now built on OpenJDK Java 11 and takes advantage of all its exciting novelties.

- ✿ avoid license fees
- ✿ up-to-date security
- ✿ supports 4K resolution
- ✿ keep up with latest platform technology






New select painted

A far more accurate new algorithm to select painted regions saves you lots of tedious manual work.



Gerber X3 Input

Transfer the component information held in CAD which is needed in manufacturing

-  Visualize the component placement to check for errors and set up assembly
-  Script the pick&place machine programs
-  Assist in the procurement of the components

This is a licensed option but free of charge for all maintenance customers for the duration of their UcamX maintenance contract.



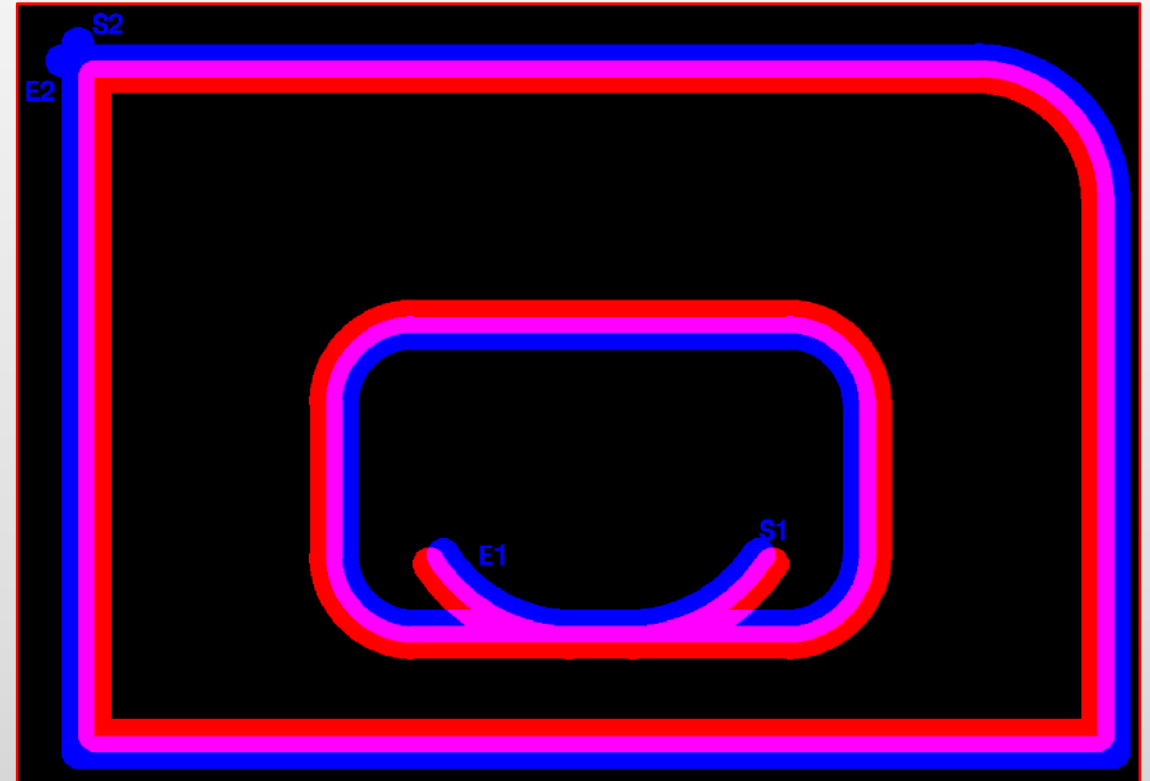
Embedded 7-zip is upgraded to latest version, 19.00

- ✱ Stronger encryption
- ✱ Random initialization vector increased from 64 bit to 128 bit
- ✱ Improved pseudo-random number generator
- ✱ Faster LZMA/LZMA2 compressing
- ✱ Supports "Large memory pages" mode in Windows 10



Rout Manager – Preview of compensated rout layer

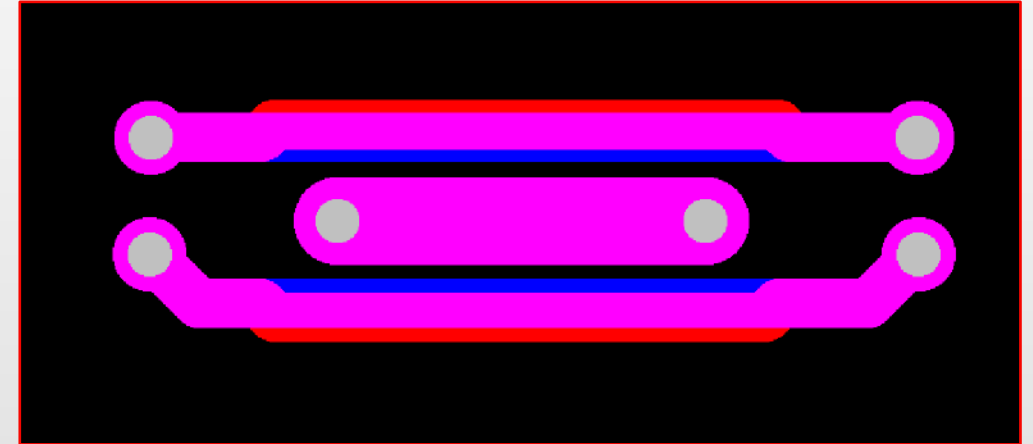
- ☀ Check the rout path before production
- ☀ Avoid scrap



YELO Copper Adjuster – New functionality

Partial track move on track to track clearances

✱ Solves more problems automatically

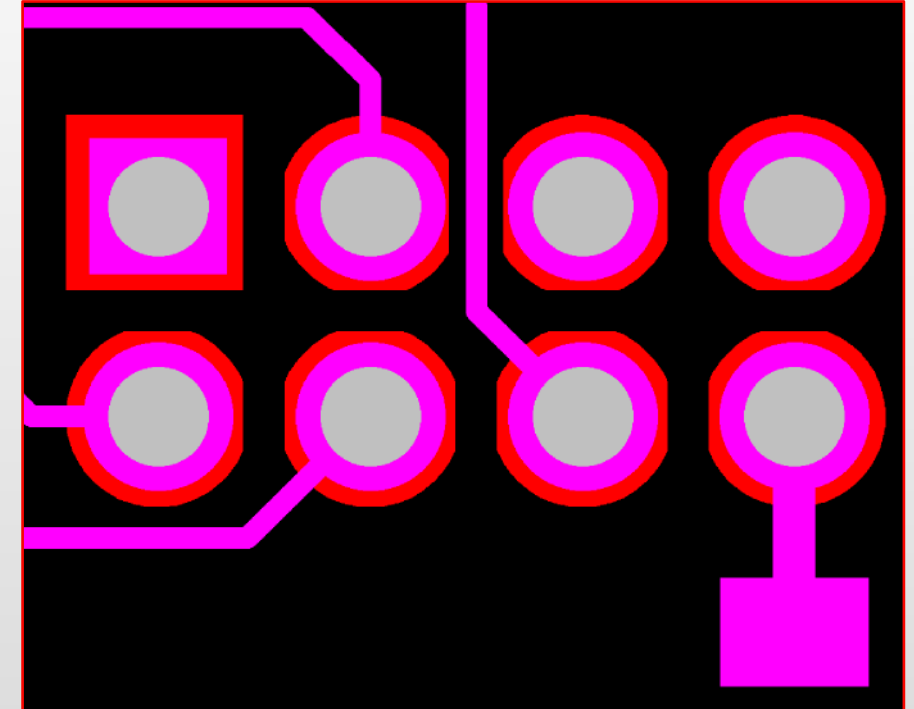


Partial Track Move for
track to track clearance
violations

YELO Copper Adjuster – New functionality

Increase ring to an optimal value,
and then shave to respect min. ring

 Higher yield

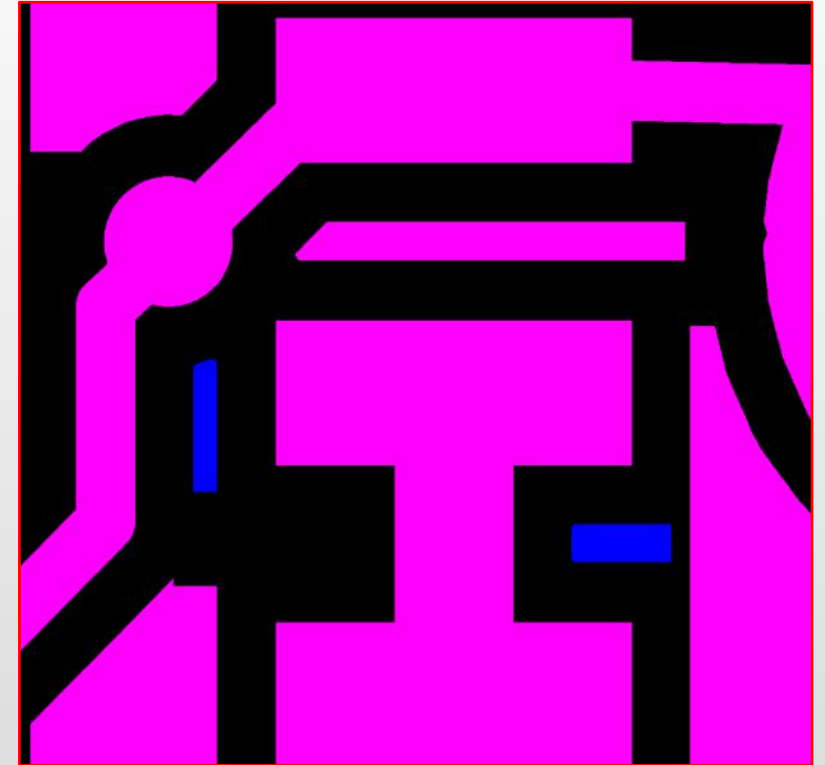


Achieve as much
annular ring as
possible even in tight
situations

YELO Copper Adjuster – New Functionality

Automatic removal of small copper regions, both in these from the original data as those resulting from plane adjustments

✦ Eliminates a manual step



Remove of small copper regions

YELO Copper Adjuster – New functionality

Different annular ring values for:

- ✱ Mechanical vias
- ✱ Laser vias
- ✱ Component holes
- ✱ Mechanical holes

Annular rings	Overall ring	Optimum ring
Mechanical via	0	0
Laser via	0	0
Component hole	0	0
Mechanical hole	0	0

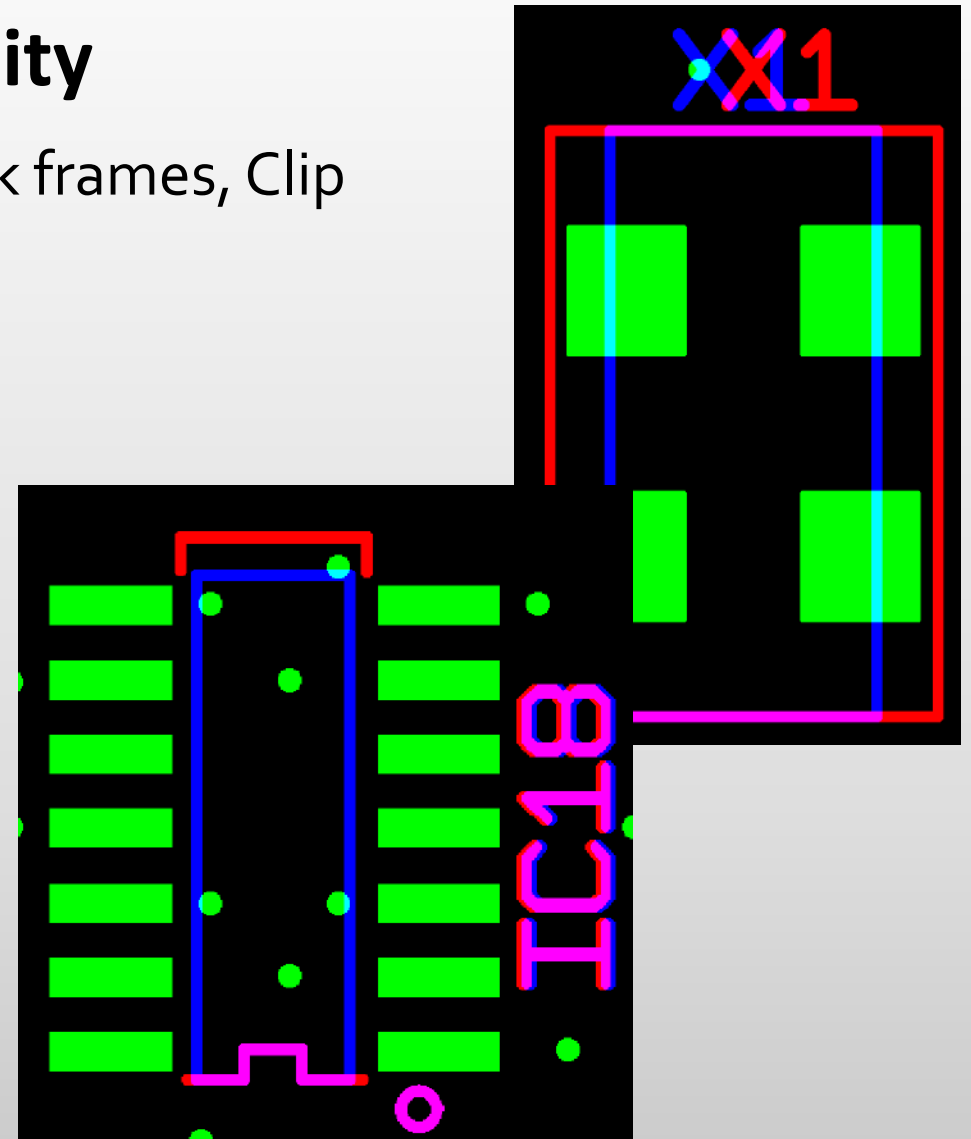
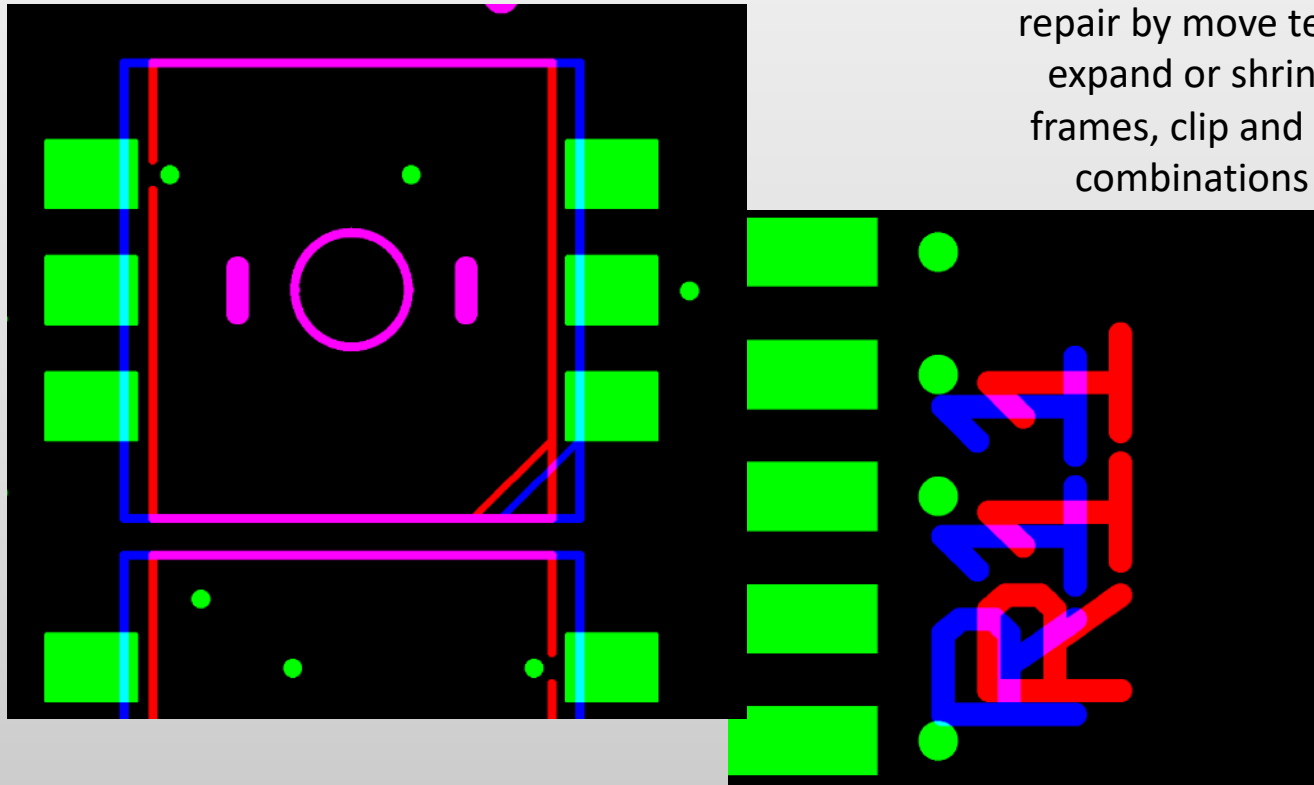
More precise adjustments for better yields

YELO Legend Adjuster – New functionality

Automatic adjustments via Text Move, Expand/Shrink frames, Clip

 Eliminates manual work

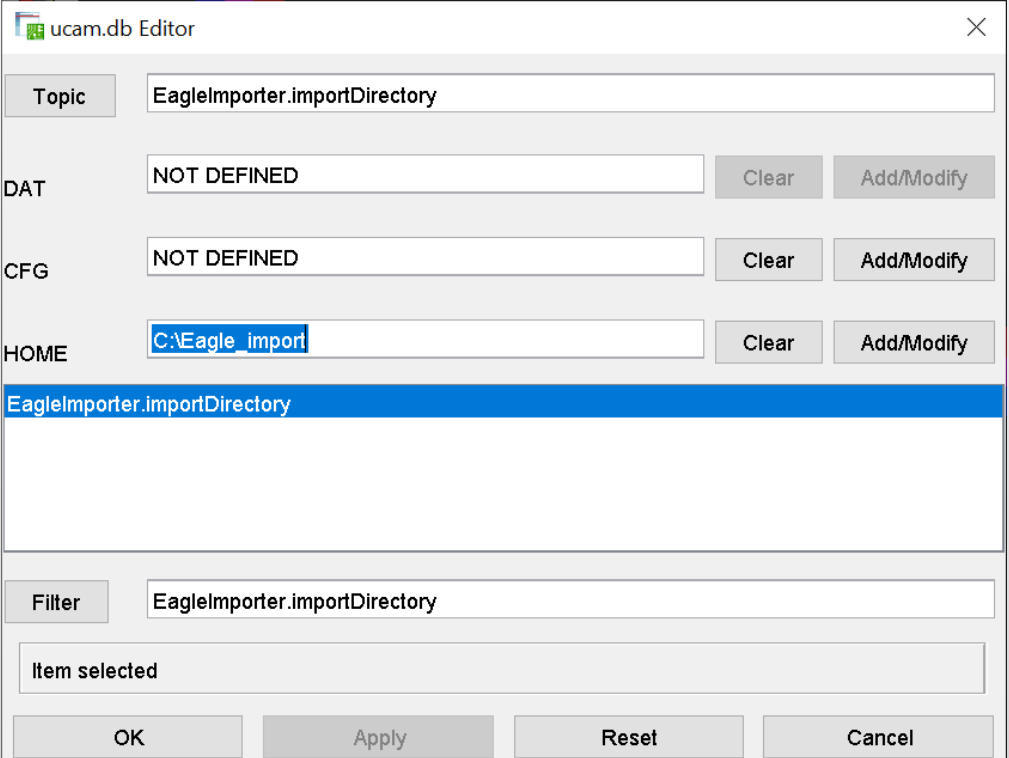
Fully automated
repair by move text,
expand or shrink
frames, clip and all
combinations



Eagle Input

You can now set a default folder in ucam.db fitting to your folder structure

 No time wasted searching for the input path



The screenshot shows the 'ucam.db Editor' dialog box. The 'Topic' field is set to 'EagleImporter.importDirectory'. Below this, there are three rows for configuration: 'DAT' is 'NOT DEFINED', 'CFG' is 'NOT DEFINED', and 'HOME' is 'C:\Eagle_import'. Each row has 'Clear' and 'Add/Modify' buttons. A list box below these rows contains 'EagleImporter.importDirectory' and is highlighted in blue. At the bottom, there is a 'Filter' field with the same text, an 'Item selected' field, and four buttons: 'OK', 'Apply', 'Reset', and 'Cancel'.

Tiff Input

Much faster Tiff input

 Slashes waiting time (up to 10 times faster)

... and more

UcamX v2020.03 comes with a host of fixes for issues you have cared to report.

Please keep on doing so. Your feedback is highly appreciated. Thank you!

The list of code fixes and enhancements is in our FTP\Ucam folder.

© Copyright 2020 Ucamco NV, Gent, Belgium. All rights reserved.

This material, information and instructions for use contained herein are the property of Ucamco NV. The material, information and instructions are provided on an AS IS basis without warranty of any kind.

Ucamco NV does not warrant, guarantee or make any representations regarding the use, or the results of the use of the software or the information contained herein.

Ucamco NV shall not be liable for any direct, indirect, consequential or incidental damages arising out of the use or inability to use the software or the information contained herein.

The information contained herein is subject to change without prior notice.

Revisions may be issued from time to time to advise of such changes and/or additions.

No part of this presentation may be reproduced, stored in a data base or retrieval system, or published, in any form or in any way, electronically, mechanically, by print, photoprint, microfilm or any other means without prior written permission from Ucamco NV.