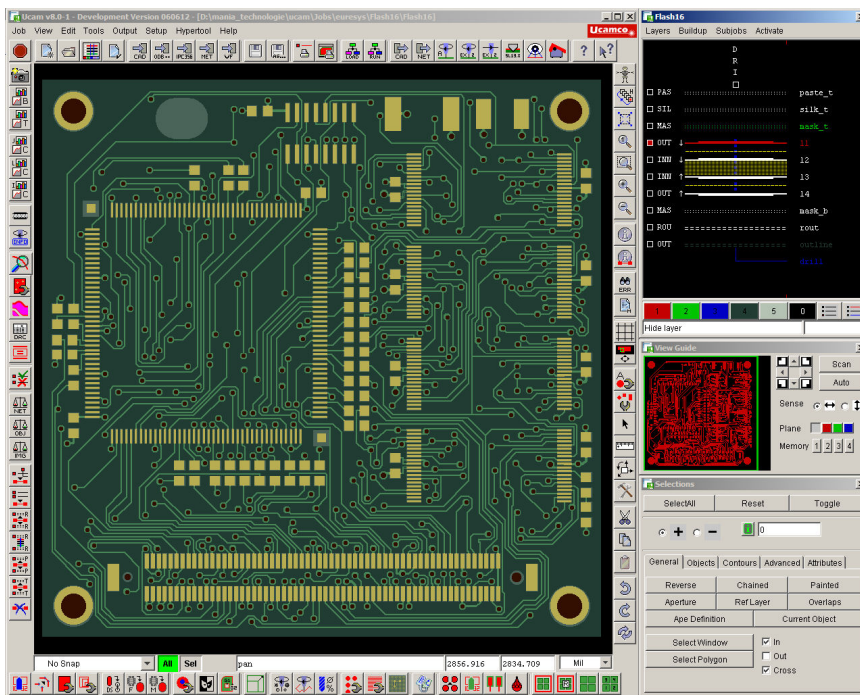


UCAM CAM++

++ CAM power
++ CAM performance



In today's fast-moving and competitive electronics industry, CAM plays a pivotal role in the process cycle from design office to shopfloor. Ucamco has more than 30 years of experience in machinery, software. Drawing together this expertise, **UCAM Cam++** drastically reduces job cycle times with powerful CAD links, fast and error-free tool generation, automated integration with costing and planning systems, and a direct, measurable improvement in shopfloor productivity and process yields. In-built dynamic automation and a user-interface structured for advanced manufacturing technologies ensure a fast roll-out needing minimum training times.

Ucamco continuously enhances UCAM with new functionality to keep your investment at the cutting edge of technology. **UCAM Cam++** has introduced **MultiSession** operation, the **Rout Constructor** tools and a new service for your customers – **Design Restore**.

- **Zero-defect tooling – for rigid and flex circuits**
- **100% integration into existing environment**
- **Out-of-the-box CAM productivity**
- **High-level automation – without limits**
- **Faster shopfloor production, higher shopfloor yields**
- **Enhanced supplier profile**

Zero-Defect Tooling

UCAM Cam++ captures not just layout data but also netlist information, customer specifications, mechanical drawings and manufacturing rules in a single smart engineering database. From the database launch automatic DRC and DFM checks without vendor limitations. Optimize plant yields using automated DFM routines. **UCAM Cam++** deploys powerful automatic security tools to detect accidental operator errors. For flexible circuitry see our **UCAM uFlex** brochure

Integration in existing Environment

We provide our customers with all interfaces, upstream to CAD/DFM, downstream to manufacturing and quality control. **UCAM Cam++** outputs fully-automated machine-optimized tooling for all industry-standard electrical testers and AOI systems, photoplotters, drilling and routing equipment and direct imagers. Product parameters can easily be uploaded into corporate production management databases, or in various formats for other CAD/CAM systems.

Out-of-the-Box CAM Productivity

UCAM Cam++ is delivered ready-automated with built-in dynamic functionality for a fast roll-out and a fully customized smart workflow. Labor-saving functions include automated board structuring, netlist and test-point generation without manual intervention, & dynamic yield-driven auto-panelization. Working on one job and need to look at others? No need to close down: just use **MultiSession** to open as many extra jobs as you need on your workstation.

Ucamco 

Former Barco ETS

© Ucamco NV

Bijenstraat 19, B- 9051 St.-Denijs-Westrem
Tel: +32 (0) 9 2169900 - Fax: +32 (0) 9 2169912
e-Mail: info@ucamco.com – www.ucamco.com

UCAM CAM++

++ CAM power
++ CAM performance

High-level automation without limits

UCAM Cam++ Hypertool scripting delivers in-depth custom automation without limits. Unlike batch-sequencers, HyperTools give you access to full core CAM functionality. Simplify and accelerate your process automation. Write new CAM routines to automate your new technologies or to integrate CAM deeply into your business systems. The Java™ carrier means that HyperTools are structured, robust and reliable, fully integrated into the **UCAM Cam++** GUI.

Shopfloor productivity & yields

UCAM Cam++ focuses on advanced manufacturing technology: dynamic etch compensation to raise HDI etch yields; powerful BGA optimization; input, verification and test output for embedded resistors; **SmartDrill** optimization for 30% faster drill times & improved microvia yields; powerful **Rout Constructor** tools to design and verify complex profiles; **uFlex** functionality to optimize flex circuits for long-term flexing reliability; **Smart Adjacency** to cut flying-probe test times.

Enhanced supplier profile

UCAM Cam++ enhances your supplier profile through comprehensive intelligent data input, fast clear reporting of design and manufacturability issues, increased product reliability and improved delivery times. The unique **Design Restore** function provides an extra customer service. Where an old design exists only as a phototool or drawing, scan the image and unique algorithms will rebuild the original track and pad data.

Major Benefits

- The worlds most **productive and complete** solution for the preparation of PCB tooling and production information.
- Radically **reduces** pre-production times and cuts job lead-times – at a minimum cost and without a programming overhead.
- The only system with **integrated** planning, tooling, testing, inspection and communication capabilities.
- **Out-of-the-box** productivity for **fast roll-out**; includes all the functionality required for immediate cost-effective operation – no programming delays.
- User-interface structured for high-tech manufacturing; requires **minimum training**.
- Designed for **zero-defect tooling**: no more CAM re-makes!
- **Powerful** tools to tackle defects in the incoming board data.
- Fully **automated** capability assessment functions for instant manufacturability analysis.
- **Automates** the analysis, verification, repair and optimization needed to match customers' specifications and your own production – even on the most complex boards.
- Sharpens your **competitive edge** with high-level automation, advanced fabrication functionality and enhanced productivity
- **Simplifies** and **accelerates** communication with your customers and the shop floor.
- **Comprehensive** range of field-proven input formats; never lose business through format incompatibility.
- Enhances your **supplier status** as a pro-active partner in product improvement.
- Generates **complete** data for your Management Information System.
- Generates complete data for all your **production and test equipment**, including photoplotters and direct imaging systems, drilling and routing machines, AOI, flying probe and fixture testers.
- **Cost-effective** fixtures, easier to build and integrated in a total solution with Ucam AutoFixture.
- Hardware platform **independent**: just pick the most cost-effective.
- Based on **field-proven** technology

UCAM Cam++

Productivity
Completeness
Time Reduction
Integration
Fast Production
Zero Defect
Powerful
Automation
Simplification
Acceleration
Production
Test Equipment
Cost-effective
Independent
Field-Proven
2000 Systems

UCAM Cam++ and the Ucam Electrical Test and AOI Solutions can be configured and easily used in any combination. You can either purchase combined seats, or choose a later update.

Ucamco 
Former Barco ETS

© Ucamco NV
Bijenstraat 19, B- 9051 St.-Denijs-Westrem
Tel: +32 (0) 9 2169900 - Fax: +32 (0) 9 2169912
e-Mail: info@ucamco.com – www.ucamco.com