





Integr8tor v2020.12



Panoramica della versione

Vantaggi competitivi...

- QED analisi per backdrilled PCBs 
- Altium PCB Input Connector 
- DPMX (IPC-2581) data input 
- QED formattazione condizionata in base allo spessore del rame 
- E altro ancora!

QED analisi per backdrilled PCBs

- Totalmente **automatico** input per prodotti backdrilled
- **Analisi** completa per backdrill-specific QED

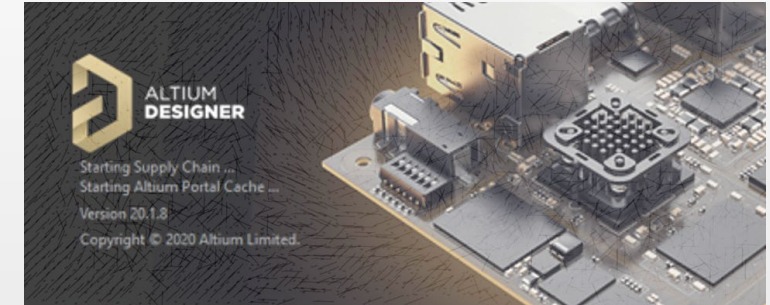
(Nuova opzione)

INITIAL	FORMAT	RENAMED	FUNCTION
7770_Non_Switch_081015-bd-1-4.drl	excellon2	drl_1_4	backdrill
7770_Non_Switch_081015-bd-1-6.drl	excellon2	drl_1_6	backdrill
7770_Non_Switch_081015-bd-1-8.drl	excellon2	drl_1_8	backdrill
7770_Non_Switch_081015-bd-24-10.drl	excellon2	drl_10_24	backdrill
7770_Non_Switch_081015-bd-24-12.drl	excellon2	drl_12_24	backdrill
7770_Non_Switch_081015-bd-24-15.drl	excellon2	drl_15_24	backdrill
7770_Non_Switch_081015-bd-24-17.drl	excellon2	drl_17_24	backdrill
7770_Non_Switch_081015-bd-24-19.drl	excellon2	drl_19_24	backdrill
7770_Non_Switch_081015-bd-24-21.drl	excellon2	drl_21_24	backdrill
7770_Non_Switch_081015-bd-24-7.drl	excellon2	drl_7_24	backdrill
7770_Non_Switch_081015-bd-24-8.drl	excellon2	drl_8_24	backdrill

Altium PCB Input Connector

- Integrazione di Altium Designer software per l'input di Altium native .pcbdoc files - totalmente automatico
- Essere **i primi ada** ad avere questa offerta !

(Nuova opzione)



DPMX (IPC-2581) data input

- Accetta i dati nel nuov standar emergente DPMX format totalmente automatico
- **Accresci il tuo mercato** accettando ogni formato dai tuoi clienti

(Nuova opzione)



Basato su spessore del rame

- Le celle rosse nel QED PDF dicono **molto di più** quando sono legate agli isolamenti, larghezze e allo spessore del rame.....

(Aggiunta all'esistente QED PDF Report)

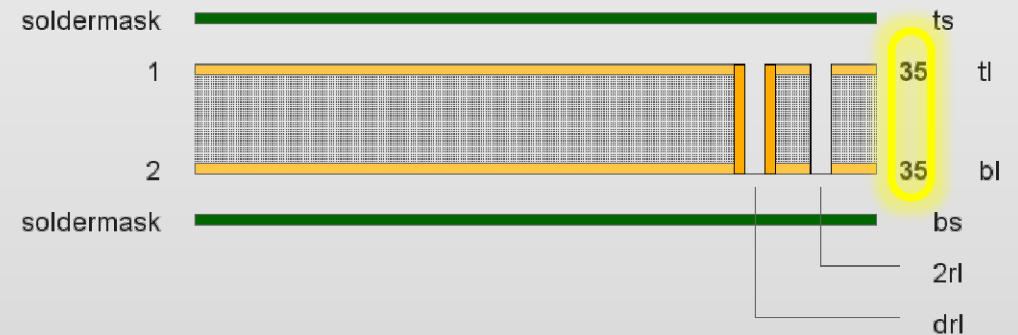
```
61 Example:
62 <FormattingRule id="minimumtrack">
63   <Condition>lessthan</Condition>
64   <Value1>0.075</Value1>
65   <ThicknessRule id="base">
66     <Condition>lessthan</Condition>
67     <Value1>0.035</Value1>
68   </ThicknessRule>
69 </FormattingRule>
70 <FormattingRule id="minimumtrack">
71   <Condition>lessthan</Condition>
72   <Value1>0.1</Value1>
73   <ThicknessRule id="base">
74     <Condition>between</Condition>
75     <Value1>0.035</Value1>
76     <Value2>0.070</Value1>
77   </ThicknessRule>
78 </FormattingRule>
79 <FormattingRule id="minimumtrack">
80   <Condition>lessthan</Condition>
81   <Value1>0.125</Value1>
82   <ThicknessRule id="base">
83     <Condition>greaterthan</Condition>
84     <Value1>0.070</Value1>
85   </ThicknessRule>
86 </FormattingRule>
87 -->
```

Critical Trace Width	Copper to Copper Clr.
mm	mm
>0.40	³ 0.23

Per-lato nel QED valore base e finito dello spessore del rame

- Include gli spessori del rame – assieme ad altri parametri produttivi– in un gbrjob file, aggiunto da un archivio e inviato ad Integr8tor
- Semplice, facile e veloce...

(Aggiunta all'esistente QED PDF Report)



Files - Original					
Initial	Renamed	Function	Position	Color	Thickness
					Base
					Finished

Registrazione interattiva del tempo impiegato per un lavoro

- Scopri quanto tempo i tuoi operatori dedicano ai lavori in modo interattivo durante una sessione "To Ucam"
- Identifica i clienti che forniscono set di dati che richiedono un intervento manuale sistematico e **avvia la conversazione** per portare i dati agli standard

(Aggiunta all'esistente Cockpit)

Original Data	Interactive Time
CDIpinv1.40vp (ID 18941).zip	01:21
107665.zip	00:00
107470.zip	00:00
107154.zip	00:00
107084.zip	
106488.zip	01:17
106046.zip	00:00
105847.zip	00:00
105832.zip	00:00

Auto log-off

- Sessioni Cockpit inattive o obsolete, ad esempio dopo un guasto alla rete o alla VPN, verranno terminate automaticamente
- **Evita di rimanere senza licenze** cockpit perché gli utenti si sono dimenticati di disconnettersi

(Aggiunta all'esistente Cockpit)

Auto log-off

Automatic log-off after

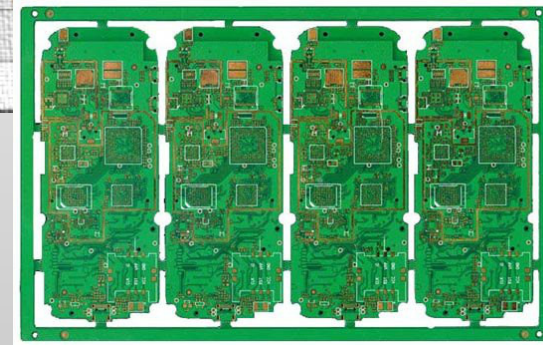
minutes

Rout length analysis

- La fresatura impatta molto sui tempi e costi di consegna
- Il nuovo QED Depanel Rout Length aiuta ad anticipare questo

(Aggiunto all'esistente Auto Analysis and QED PDF Report)

Customer Panel (Delivery Array, Shipping Panel) - Original									
Original Image	Panel Size	Left Border	Right Border	Top Border	Bottom Border	X Spacing	Y Spacing	PCB's	Depanel Rout Length
	mm x mm	mm				mm	mm		mm
Single PCB	178.021 x 143.000	15.000				000	3.000	3 x 2	1914.126



Aggiunta di extra finiture finali e colori solder mask

- Aggiunta di nuovi colori del solder mask e finiture finali per migliorare lo stato dell'arte della produzione

(Aggiunta all'esistente Cockpit, Email Input Integration, Web Input Integration, Hotfolder Input Integration)

Estensione dell'analisi QED Solder Mask

- Analisi accurate del solder mask sul top e bottom e via holes per aiutare ed **eliminare sorprese in produzione**

(Aggiunta all'esistente Auto Analysis and QED PDF Report)

Annotated QED PDF

- Le descrizioni comandi PDF QED di nuova concezione consentono agli utenti inesperti di orientarsi in un attimo ...

(Aggiunta all'esistente QED PDF Report)

QED PDF Summary table revision

- La tua posizione one-stop è stata ottimizzata per trovare i dati in modo veloce e confortevole

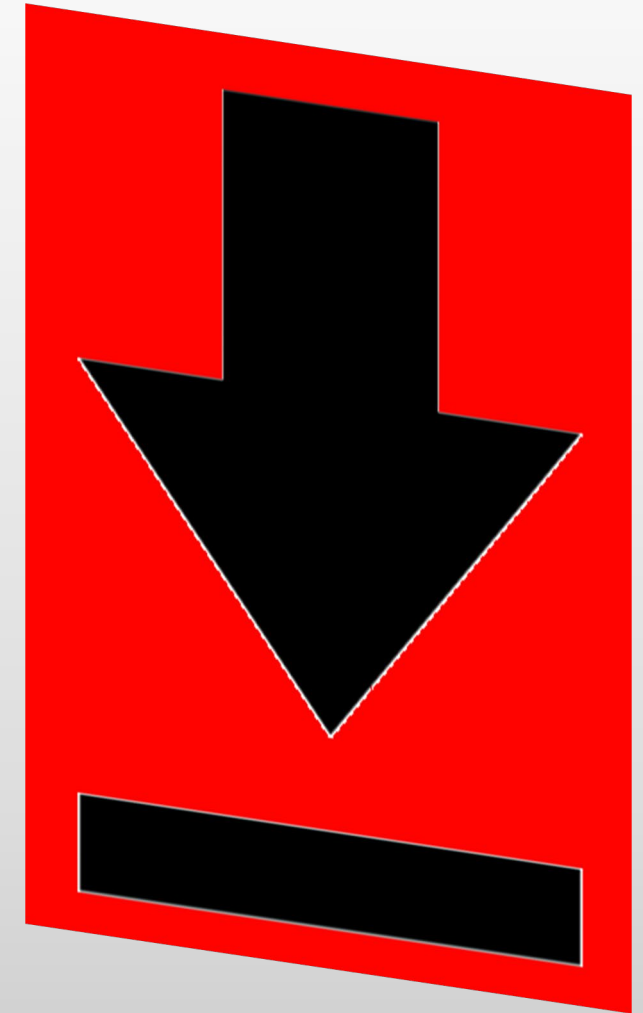
(Aggiunta all'esistente QED PDF Report)

Partly Covered Via Holes	One Side Covered Vias ⓘ	Both Sides Covered Vias ⓘ	No Side Covered Vias ⓘ
No			

Through-hole vias that are either (partially) covered by soldermask on the top layer and (partially) free on the bottom layer or (partially) free on the top layer and (partially) covered on the bottom layer.

Summary - General - Original			
PCB Size	95 mm x 103.5 mm	Customer Panel Size	
PCB Thickness	1.6 mm	Max. Aspect Ratio on PTH	8.0
Copper Layers	6	Pressing Stages	1
Surface Finish	unknown	Drill Hole Density	2101 Holes/dm ²
Solder Mask	Both	Testable Points	1508
Solder Mask Color	unknown	Min. SMD/BGA Size	0.28 mm
Legend	No	Via in Pad	No
Legend Color		Stacked Vias	No
Edge Connector Area	0 dm ²	Castellated	No
Peeloff Mask	No	Anomalies	No
Carbon Mask	No		

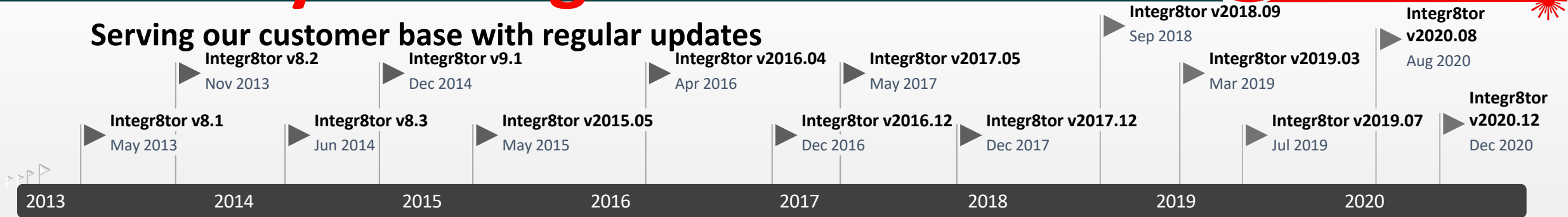
- Il file di installazione può essere scaricato da <ftp://ftp.ucamco.com/Integr8tor>
- Si consiglia di installare questo aggiornamento il prima possibile
- Per ulteriori domande, contatta il nostro partner commerciale locale o l'helpdesk di Ucamco
- Ti ringraziamo per aver scelto un prodotto Ucamco



Already looking ahead



Serving our customer base with regular updates



Version	Release date	Highlights	
8.1	May-13	Support for ODB++ v7.	Compatible with Windows server 2012 and windows 8.
8.2	Nov-13	Detection and flagging of duplicate archives.	Edge connector recognition.
8.3	Jun-14	New standard parameters.	Determination of laser/mechanical drilling.
9.1	Dec-14	Support for Gerber X2 datasets.	Optimized and new QED values.
2015.05	Jun-15	New standard parameters.	Determination of laser/mechanical drilling.
2016.04	Apr-16	SMD/BGA pads differentiates copper- and solder mask defined	DFM Checks (former Capabilities) revised
2016.12	Dec-16	Introducing Integr8tor Job Perspectives	Drill hole tolerances
2017.05	May-17	Support for PCB Surface finish	Same-sized jobs detection
2017.12	Dec-17	Checkpoint review extensions for various QED results	Analysis of via holes with different solder mask openings top/bottom
2018.09	Sep-18	New QED feature: Minimum Critical Trace Width	User-selectable layer registration
2019.03	Mar-19	Measure functionality and freely displayable layers in Checkpoint	Extended import&export support for advanced ODB++ features
2019.07	Jul-19	Introducing C8 Inspect	QED Ring Analysis per tool function
2020.08	Aug-20	UcamX Workflow Edition	Must-have QED and Autoclean Additions
2020.12	Dec-20	QED Backdrill analysis	Altium PCB Input Connector

© Copyright 2021 Ucamco NV, Gent, Belgium. All rights reserved.

This material, information and instructions for use contained herein are the property of Ucamco NV. The material, information and instructions are provided on an AS IS basis without warranty of any kind.

Ucamco NV does not warrant, guarantee or make any representations regarding the use, or the results of the use of the software or the information contained herein.

Ucamco NV shall not be liable for any direct, indirect, consequential or incidental damages arising out of the use or inability to use the software or the information contained herein.

The information contained herein is subject to change without prior notice.

Revisions may be issued from time to time to advise of such changes and/or additions.

No part of this presentation may be reproduced, stored in a data base or retrieval system, or published, in any form or in any way, electronically, mechanically, by print, photoprint, microfilm or any other means without prior written permission from Ucamco NV.