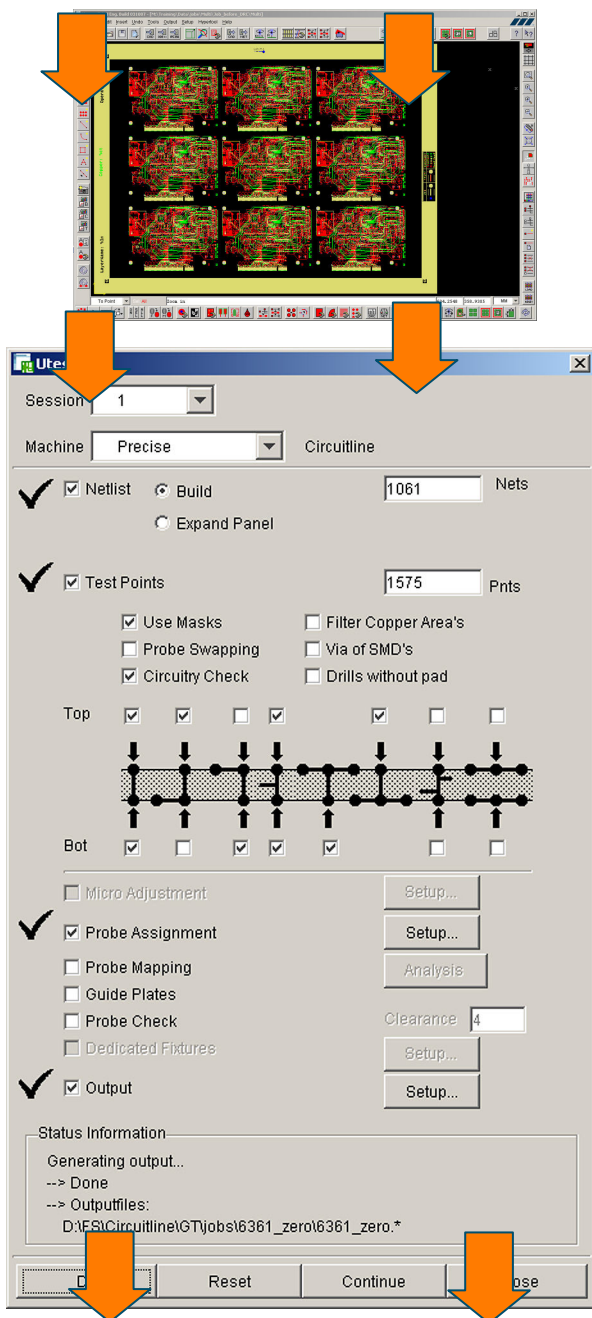


CAM

IPC



Loc8

m8

Ultim8

Valid8

Acceler8

Micro

# SmartTest

## The Clever Way of Integrating your Electrical Test Systems

**SmartTest** is a productive and secure dedicated data-preparations seat for Mania's Electrical Test Systems, such as: Loc8, Ultim8, Acceler8, m8, Valid8 and Micro.

The world-class netlist generation algorithms are **fast** and **accurate**. Jobs of any complexity are processed flawlessly. Sophisticated Netlist Compare and Analysis detect anomalies. This results in highest operator **productivity** and 100% netlist **security**.

Best-of-Class test point generation algorithms, based on IPC guidelines. They **analyze** all layers, the exact copper image, the mask and drill information to **generate** test points. The algorithms **automatically** handle loops and odd-shaped pads correctly and support 2-3-4 point and z axis Auto-Staggering. SmartTest provides 100% **secure** test point generation, highest test speed at the preferred test strategy and the highest front-end operator **productivity**.

Sophisticated adjacency algorithms, including 3D adjacency **increase** test speed at the preferred test strategy.

The workflow assistance **guides** through the electrical test job-preparation. You benefit of a short learning curve, few operator mistakes and the overall **ease of use**.

**SmartTest** comes with a seamless link with all Mania Electrical Testers, optimized for **productivity** and **security**. It also drives all common third party Electrical Testers (optional). Additionally you are **compatible** with the Ucamco Test Floor Integration (TFI).

**SmartTest** supports a wide range of input formats including ODB++ and IPC-D-356A/356B. Complex buildups with an unlimited number of blind layers and buried vias are handled effortlessly. User friendly operation, integration in any environment. It handles a wide range of customer jobs in a fast and productive way.

**SmartTest** contains the field-proven Ucam technology that is very reliable, fast and handles the most complex jobs. The Edit functions correct faulty customer data and automatically handles unlimited positive/negative layers. With our user interface for a range of devices, you will gain a shorter learning curve.

*Electrical Grid Test Systems and Flying Probe Test Systems can easily be integrated with **SmartTest**. Our **Smart** software family also provides products for the integration of AOI Systems and PhotoPlotters.*

**Ucamco**  
Former Barco ETS

© Ucamco NV  
Bijenstraat 19, B- 9051 St.-Denijs-Westrem  
Tel: +32 (0) 9 2169900 - Fax: +32 (0) 9 2169912  
e-Mail: [info@ucamco.com](mailto:info@ucamco.com)